

DC1

F O R  
V I S I O N A R I E S  
O N L Y

CAN YOU SEE  
WHAT OTHERS  
DON'T?





CAN YOU  
SEE WHERE  
THE FUTURE  
MOVES?

CAN YOU SEE  
FROM A DIFFERENT  
PERSPECTIVE?



Y O U A R E O N E O F U S



DGI

# MEET THE VISIONARIES

1. Future is not something we can imagine. It's something we can shape.

2. Visionaries are the ones who can perceive the changing pace of history before anyone else.

3. They can see what happens next because they are the ones who make it happen.

4. Trendsetters, innovators, groundbreakers. If you are one of us, this is for you.



THIS IS NOT  
ANOTHER TOWER BY  
THE DUBAI CANAL.

THIS IS THE ONE.  
THIS IS DG1.



# DG1

DG1 is the first tower of its kind designed by DarGlobal, the visionary brand that was among the first to introduce luxury brands into living spaces in Dubai.



*automobili*  
**Lamborghini**

**W**  
HOTELS  
WORLDWIDE

**MISSONI**

**ELIE SAAB**

**VERSACE**  
HOME

**TRUMP**  
THE TRUMP ORGANIZATION

**PAGANI**





# THE FIRST OF ITS KIND



DG1 represents the FIRST of a series of exclusive luxury residences with the ultimate architecture, the ultimate Location and the ultimate interior specifications.





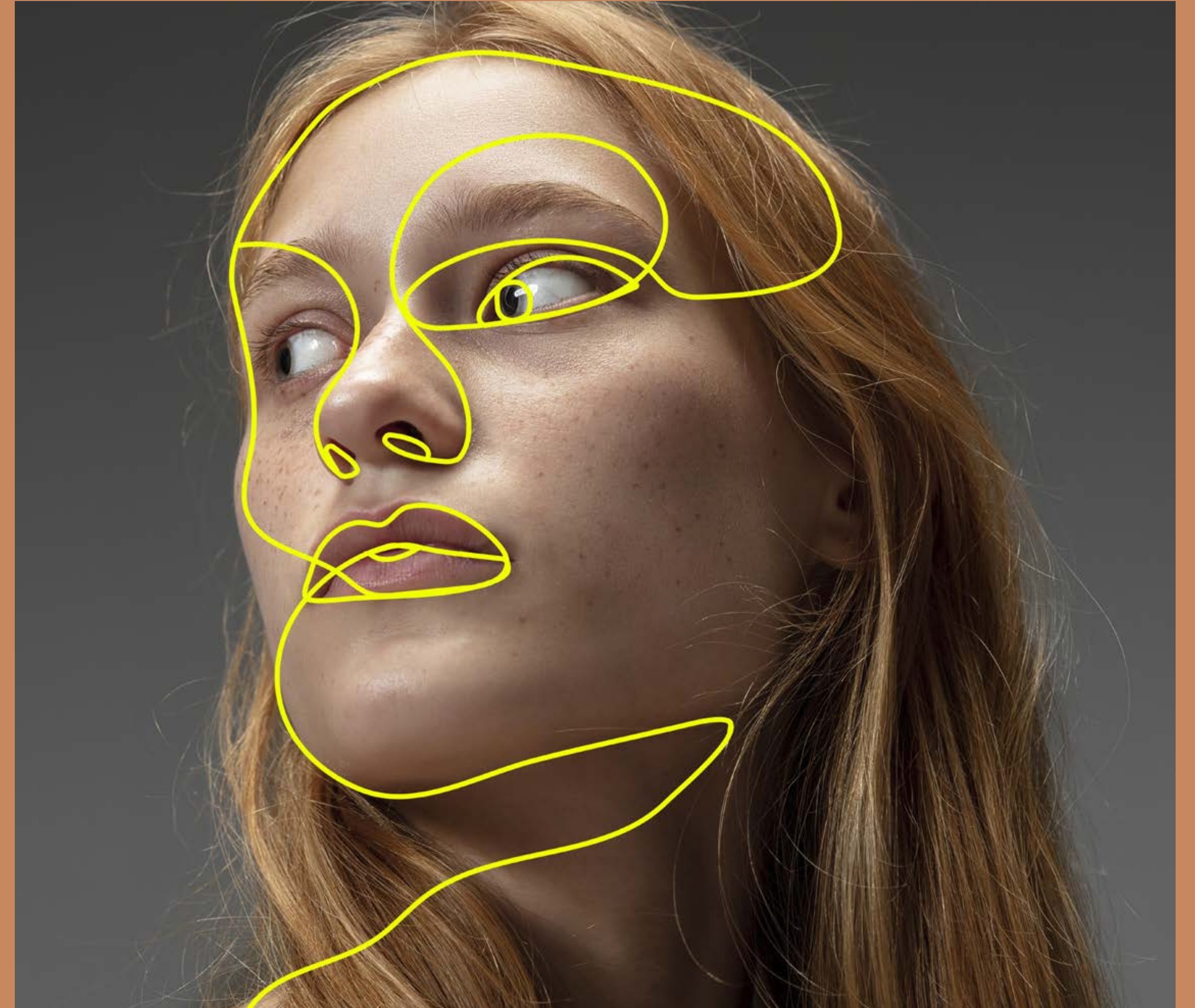
## D Y N A M I C A E S T H E T I C S

The architecture of DG1 fully reflects its dynamic attitude. Like an haute couture creation, its distinctive twisting profile, it opens the doors of imagination, inspiring each of us in a different way.



# A PIECE OF ART

DG1 stands out from the panorama since it recalls a piece of art rather than a conventional tower. It's a shape that reshapes the city around it. A sculpture to inhabit, a monument to living.



THE CHARM OF  
EXCLUSIVENESS

Exquisite things are made for a few. DG1 is conceived as a low-density project, a human-scale that enhances the spaces and highlights a dedicated attention to details and to inhabitants.



CRAFTED BY  
GENSLER  
ARCHITECTS

The architecture fully reflects the dynamic attitude of DG1. Standing out from the cluttered panorama as it recalls a piece of art rather than a conventional tower.

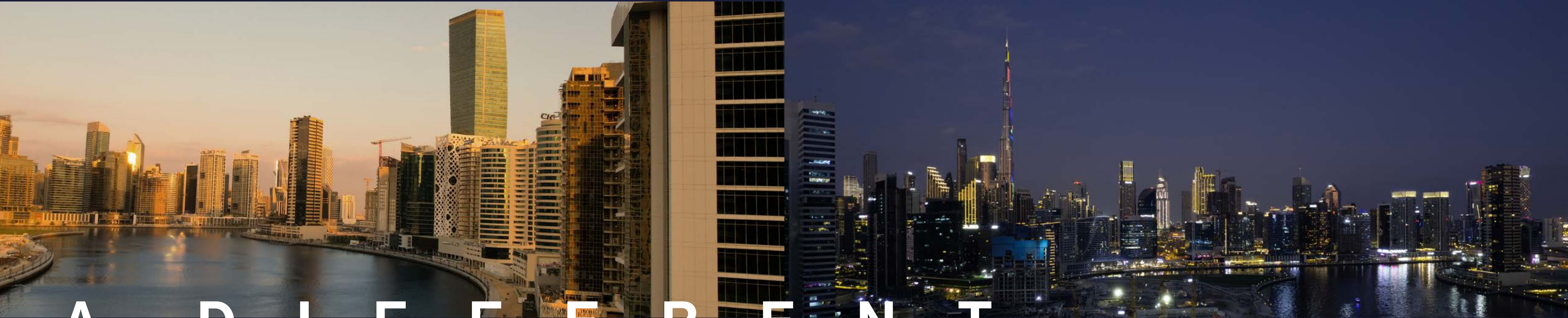
Crafted by Gensler Architects, the most avantgarde designers of our time, the DG1 tower embodies a shape that reshapes the city around it. A sculpture to inhabit, giving every floor a new perspective of the world.





C A N Y O U S E E F R O M A D I F F E R E N T P E R S P E C T I V E ?





A D I F F E R E N T  
V I E W

DG1 is located in the heart of Business Bay directly on Dubai Canal, where stunning views of the city and the water will impress the residents and their guests. The units enjoy North and East/ West views, all of them facing Downtown Dubai and Burj Khalifa.

BURJ KHALIFA &  
DOWNTOWN VIEWS







NORTH-EAST DAY VIEW



NORTH-EAST NIGHT VIEW



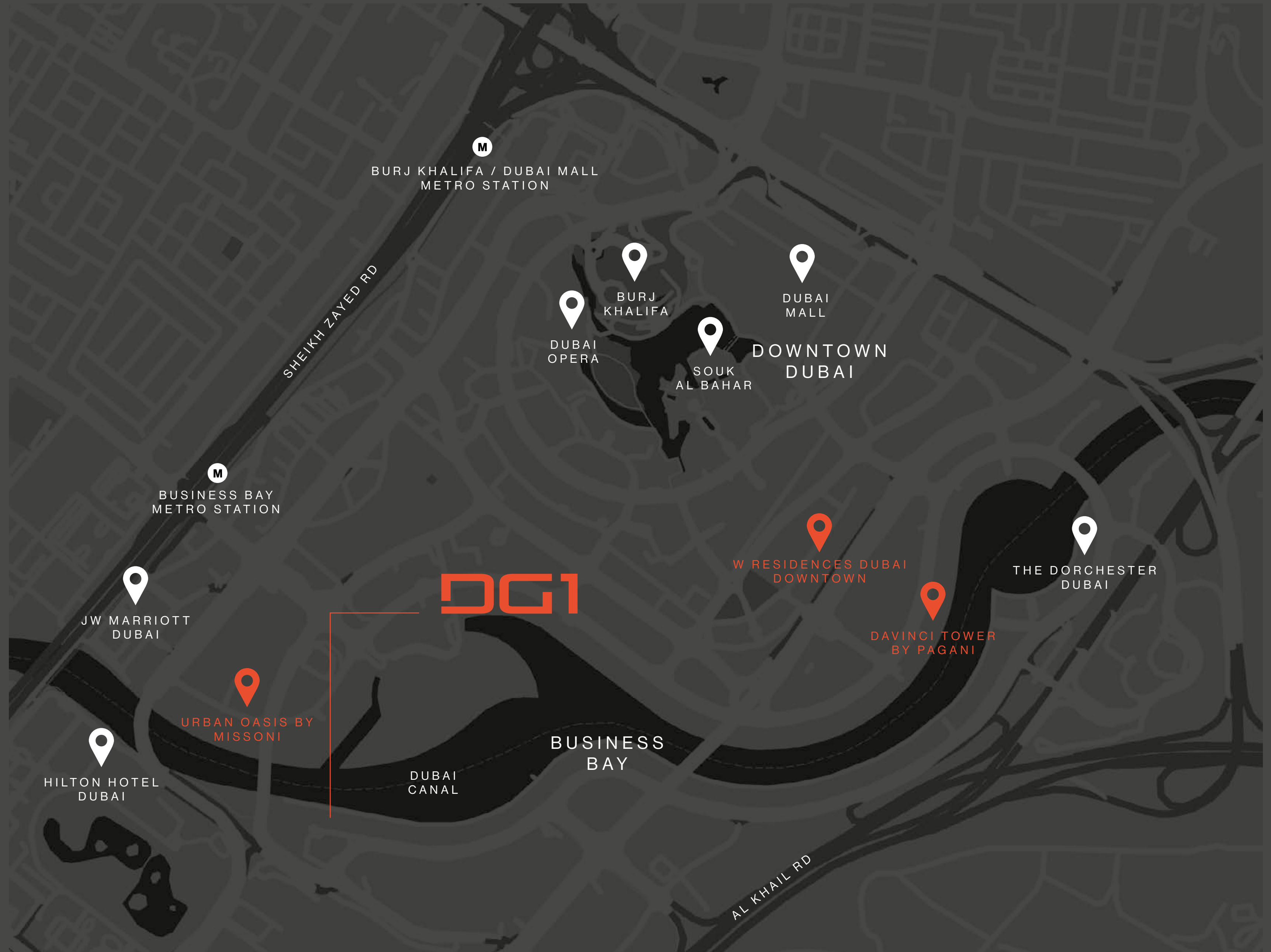
NORTH-WEST NIGHT VIEW



# LOCATION

The strategic location of DG1 grants an unbelievable proximity to all that matters. With Burj Khalifa, Dubai Mall and Dubai Opera just a few steps away, and easy access to main roads like Sheikh Zayed Rd, Al Khail Rd and Meydan Rd, DG1 truly embodies the vibrant soul of the city.

- 4 MIN TO M URBAN OASIS BY MISSONI
- 4 MIN TO HILTON HOTEL DUBAI
- 4 MIN TO JW MARRIOTT DUBAI
- 5 MIN TO THE DUBAI OPERA
- 5 MIN TO M DAVINCI TOWER BY PAGANI
- 6 MIN TO BURJ KHALIFA
- 6 MIN TO THE DUBAI MALL
- 6 MIN TO THE DORCHESTER DUBAI
- 7 MIN TO M W RESIDENCES DUBAI - DOWNTOWN
- 9 MIN TO SOUK AL BAHAR
- 12 MIN TO DUBAI INTERNATIONAL AIRPORT









# T H E W O N D E R I N S I D E

In the building, a great variety of residences in terms of spaces and sizes is conceived to satisfy every kind of need. Style, comfort and luxury are what make these apartments truly unique: decorated with a classy and contemporary taste, each with a private balcony to enjoy the impressive views.







THE SPACE INSIDE DG1 HAS  
BEEN DESIGNED AND CRAFTED  
TO THE HIGHEST STANDARDS,  
IN ORDER TO OFFER A TRULY  
UNIQUE & PREMIUM LIVING  
EXPERIENCE.







# MARVEL IS NOT A DETAIL



The materials and the finishings that compose the residential units are of the finest quality and standard. European marble floors and european bathroom fixtures underline the superior class of these spaces, as well as the stylish European kitchens.



THE ULTIMATE  
PREMIUM  
AMENITIES





DELVE INTO  
THE INFINITY  
POOL DIRECTLY  
BY THE CANAL

The Infinity pool at DG1 is a tranquil experience like no other, situated next to a children play area. Directly overlooking the Dubai Canal, you will feel as though your midday swim is a getaway around the canal.



# S K Y

# G A R D E N

Get away from the urban jungle and immerse yourself in the enchanting Sky Garden on the rooftop. Located on level 16, this is a peaceful nest to reconnect with nature.



# I N N E R P E A C E

There's no need to travel far in order to find real peace of mind.

A yoga studio in the building will be at disposal of residents who are looking for a workout or a meditation session, without leaving their home.

# STATE OF THE ART GYM AND RECREATIONAL SPACES

With open views of lush green spaces, the distinctive gym is fully equipped with everything one desires to refuel for the day ahead.





DG1

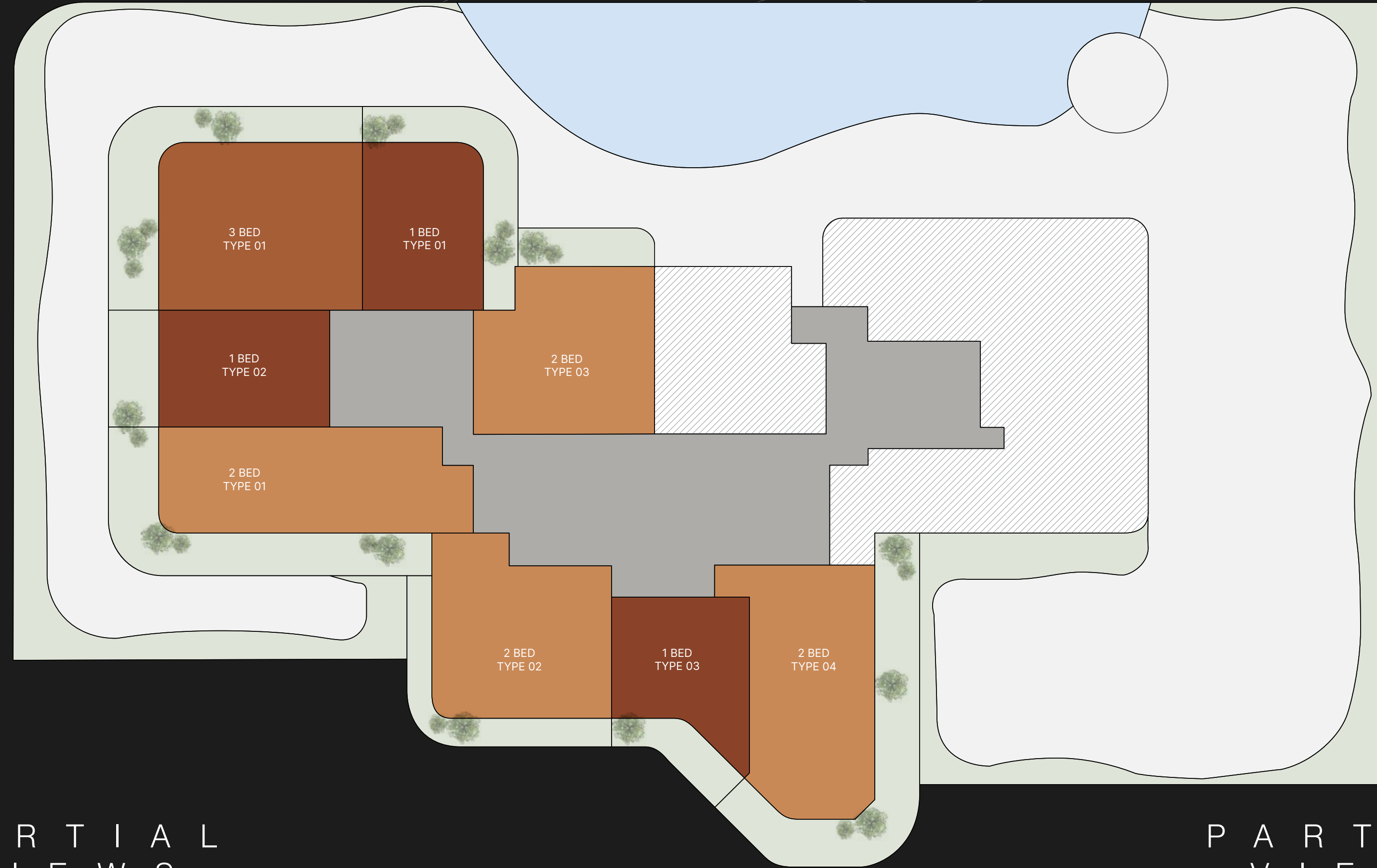
F L O O R P L A N S



# TYPICAL FLOOR PLAN GARDEN SUITES

LEVEL

01



PARTIAL  
VIEWS

PARTIAL  
VIEWS

CITY VIEWS

- ONE BEDROOM
- TWO BEDROOMS
- THREE BEDROOMS

Disclaimer: All pictures, plans, layouts, information, data and details included in this brochure are indicative only and may change at any time up to the final 'as built' status in accordance with final designs of the project, regulatory approvals and planning permissions. All accessories and interior finishes such as wallpaper, chandeliers, furniture, electronics, white goods, curtains, hard and soft landscaping, pavements, features, gym, swimming pool(s) and other elements displayed in the brochure, or within the show apartment or between the plot boundary and the unit, are not part of the unit and are shown for illustrative purposes only.

# TYPICAL FLOOR PLAN GARDEN SUITES

LEVEL 01



- ONE BEDROOM
- TWO BEDROOMS
- THREE BEDROOMS

Disclaimer: All pictures, plans, layouts, information, data and details included in this brochure are indicative only and may change at any time up to the final 'as built' status in accordance with final designs of the project, regulatory approvals and planning permissions. All accessories and interior finishes such as wallpaper, chandeliers, furniture, electronics, white goods, curtains, hard and soft landscaping, pavements, features, gym, swimming pool(s) and other elements displayed in the brochure, or within the show apartment or between the plot boundary and the unit, are not part of the unit and are shown for illustrative purposes only.



PARTIAL  
VIEWS

PARTIAL  
VIEWS

CITY VIEWS

# TYPICAL FLOOR PLAN 01A

## LEVELS

02 - 04, 09 - 12



PARTIAL  
VIEWS

PARTIAL  
VIEWS

CITY VIEWS

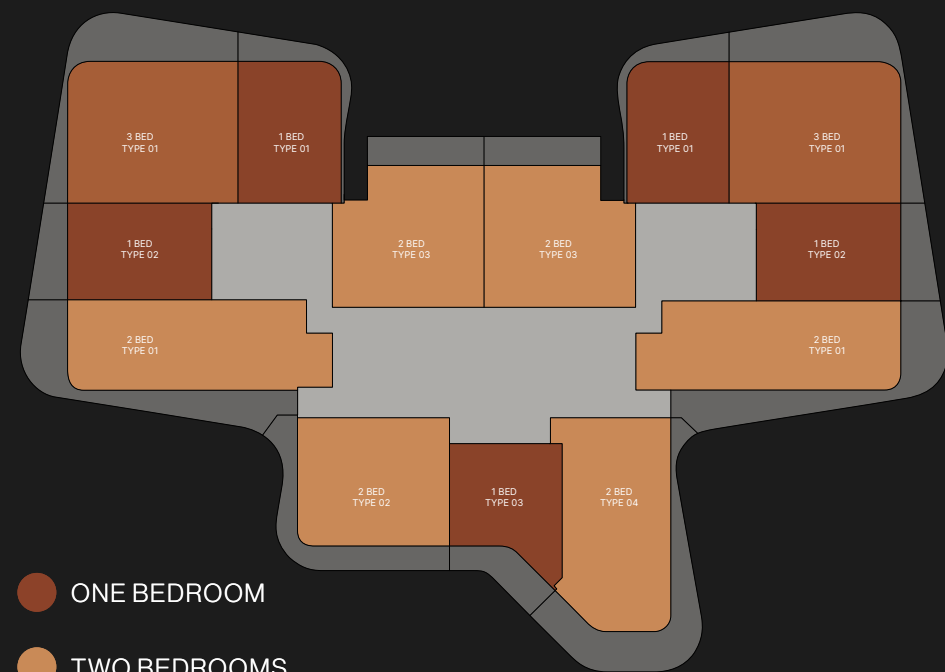
- ONE BEDROOM
- TWO BEDROOMS
- THREE BEDROOMS

Disclaimer: All pictures, plans, layouts, information, data and details included in this brochure are indicative only and may change at any time up to the final 'as built' status in accordance with final designs of the project, regulatory approvals and planning permissions. All accessories and interior finishes such as wallpaper, chandeliers, furniture, electronics, white goods, curtains, hard and soft landscaping, pavements, features, gym, swimming pool(s) and other elements displayed in the brochure, or within the show apartment or between the plot boundary and the unit, are not part of the unit and are shown for illustrative purposes only.

# TYPICAL FLOOR PLAN 01A

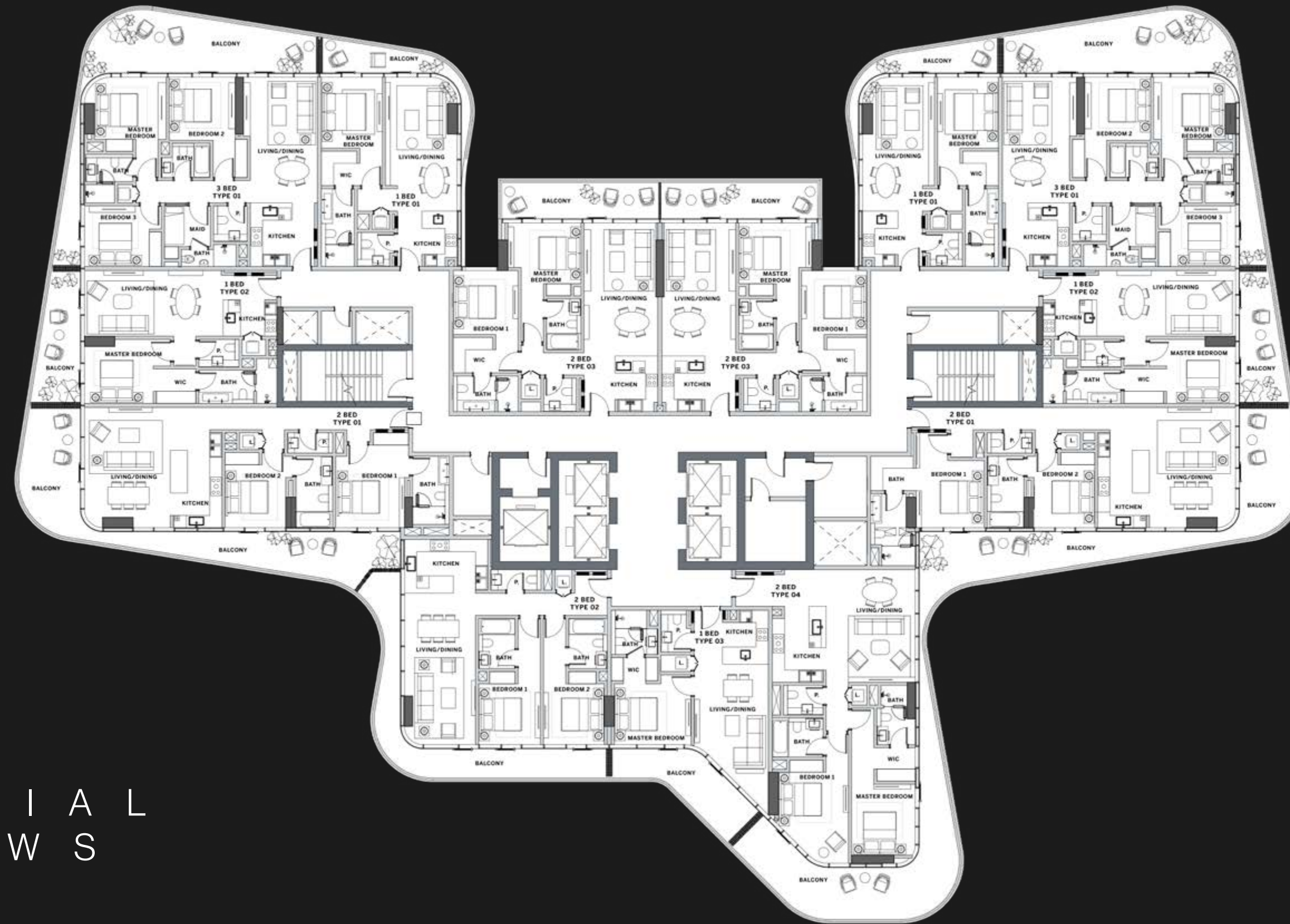
## LEVELS

02 - 04, 09 - 12



- ONE BEDROOM
- TWO BEDROOMS
- THREE BEDROOMS

Disclaimer: All pictures, plans, layouts, information, data and details included in this brochure are indicative only and may change at any time up to the final 'as built' status in accordance with final designs of the project, regulatory approvals and planning permissions. All accessories and interior finishes such as wallpaper, chandeliers, furniture, electronics, white goods, curtains, hard and soft landscaping, pavements, features, gym, swimming pool(s) and other elements displayed in the brochure, or within the show apartment or between the plot boundary and the unit, are not part of the unit and are shown for illustrative purposes only.



PARTIAL  
VIEWS

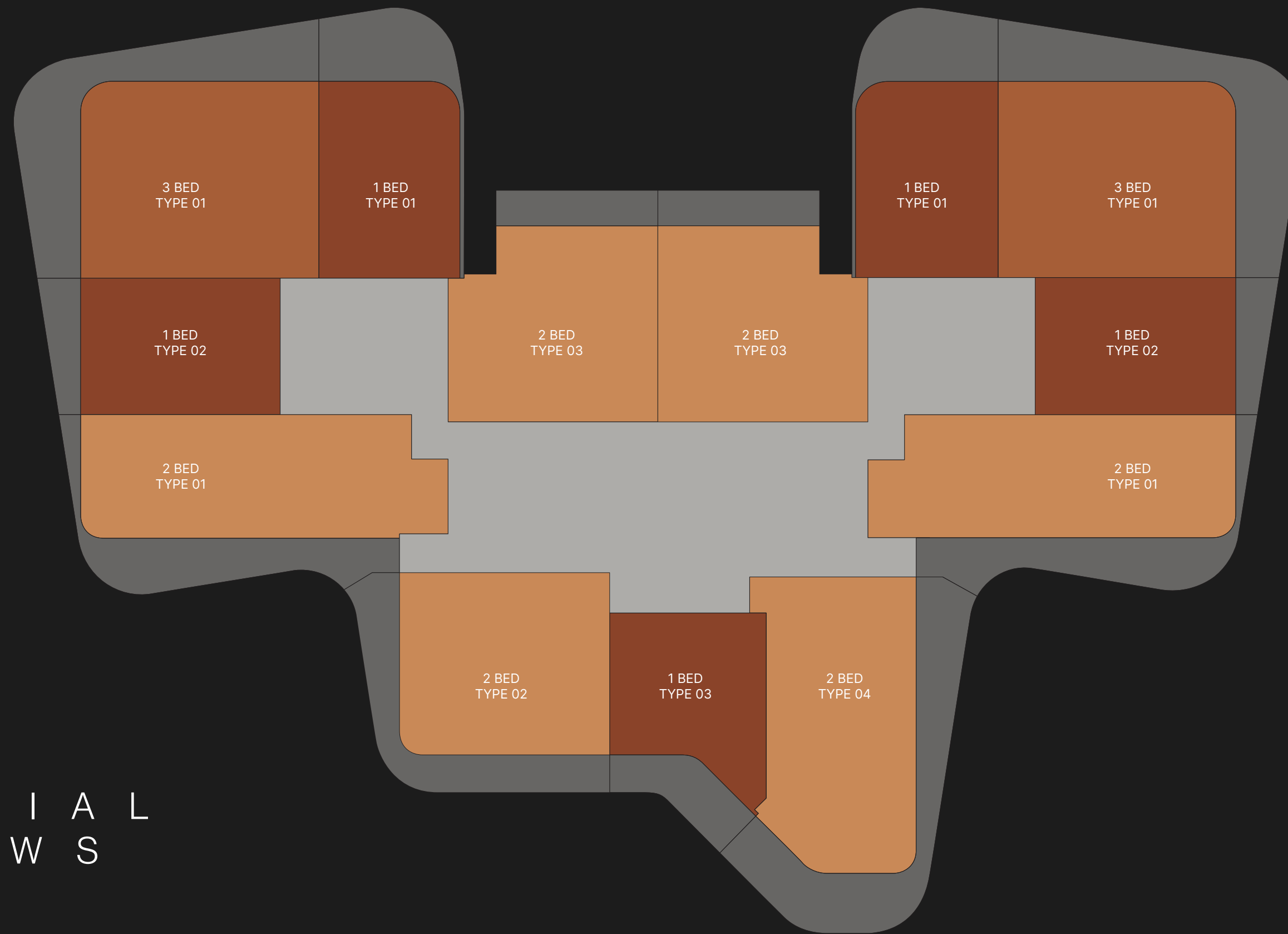
PARTIAL  
VIEWS

CITY VIEWS

TYPICAL  
FLOOR PLAN  
01B

LEVELS

05 - 08, 13 - 15



PARTIAL  
VIEWS

PARTIAL  
VIEWS

CITY VIEWS

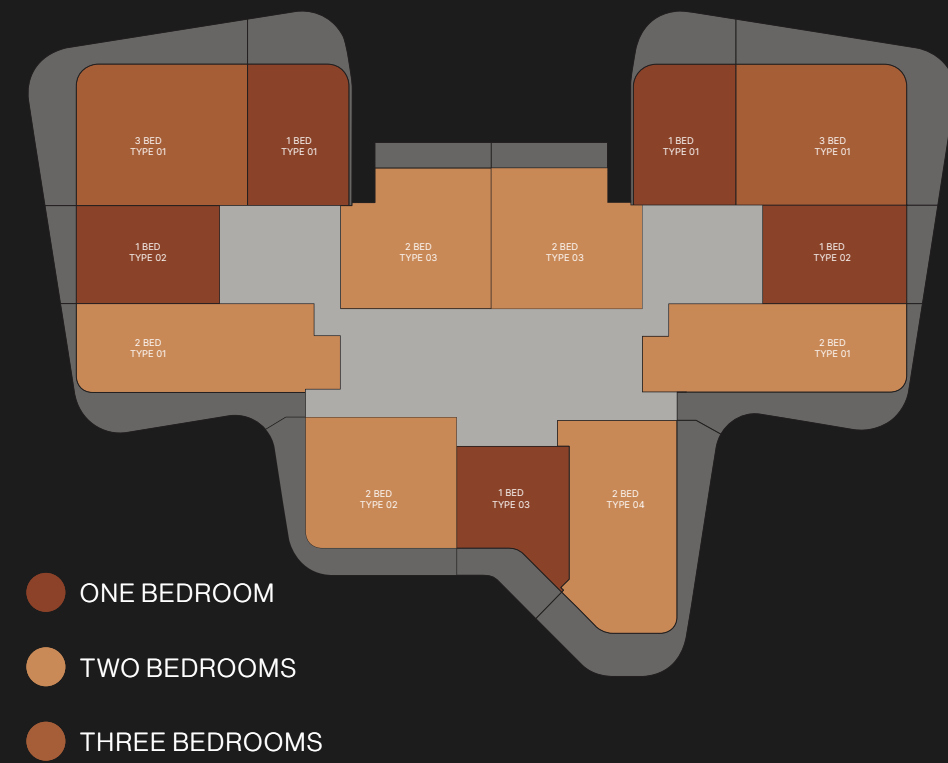
- ONE BEDROOM
- TWO BEDROOMS
- THREE BEDROOMS

Disclaimer: All pictures, plans, layouts, information, data and details included in this brochure are indicative only and may change at any time up to the final 'as built' status in accordance with final designs of the project, regulatory approvals and planning permissions. All accessories and interior finishes such as wallpaper, chandeliers, furniture, electronics, white goods, curtains, hard and soft landscaping, pavements, features, gym, swimming pool(s) and other elements displayed in the brochure, or within the show apartment or between the plot boundary and the unit, are not part of the unit and are shown for illustrative purposes only.

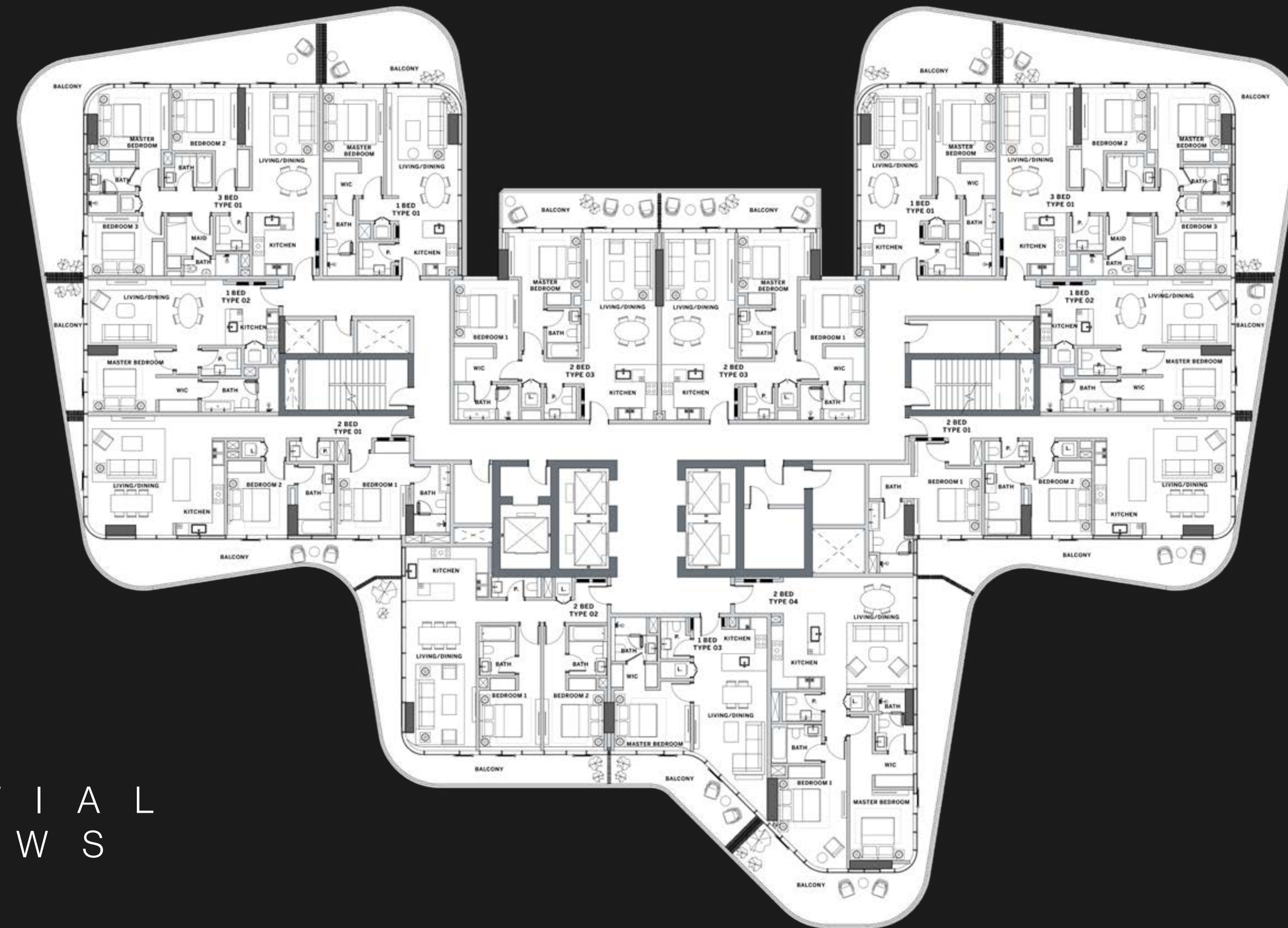
# TYPICAL FLOOR PLAN 01B

## LEVELS

05 - 08, 13 - 15



Disclaimer: All pictures, plans, layouts, information, data and details included in this brochure are indicative only and may change at any time up to the final 'as built' status in accordance with final designs of the project, regulatory approvals and planning permissions. All accessories and interior finishes such as wallpaper, chandeliers, furniture, electronics, white goods, curtains, hard and soft landscaping, pavements, features, gym, swimming pool(s) and other elements displayed in the brochure, or within the show apartment or between the plot boundary and the unit, are not part of the unit and are shown for illustrative purposes only.



PARTIAL VIEWS

PARTIAL VIEWS

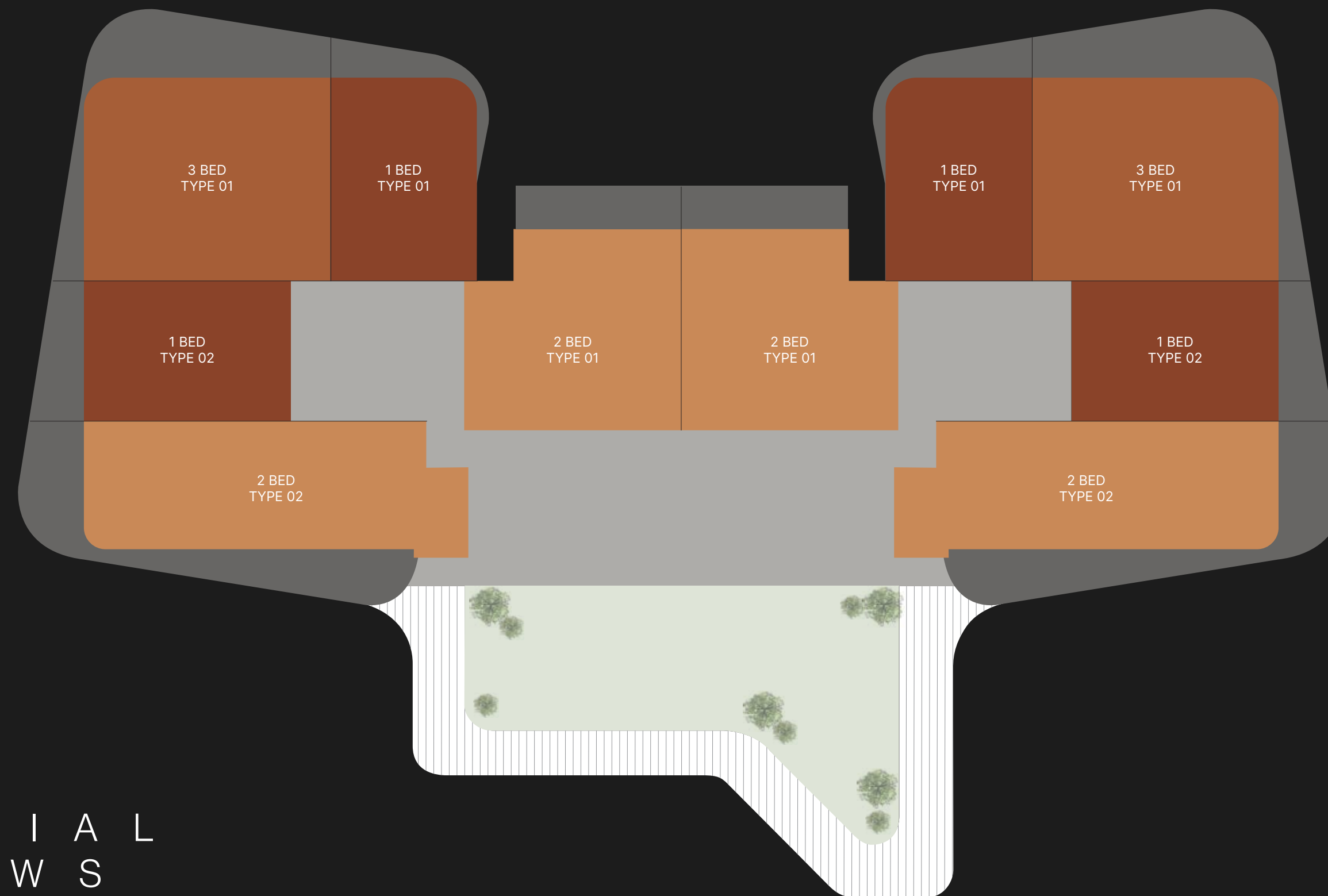
CITY VIEWS

# TYPICAL FLOOR PLAN SKY SUITES

LEVEL

16

DIRECT ACCESS TO  
THE SKY GARDEN



PARTIAL  
VIEWS

PARTIAL  
VIEWS

CITY VIEWS

- ONE BEDROOM
- TWO BEDROOMS
- THREE BEDROOMS

Disclaimer: All pictures, plans, layouts, information, data and details included in this brochure are indicative only and may change at any time up to the final 'as built' status in accordance with final designs of the project, regulatory approvals and planning permissions. All accessories and interior finishes such as wallpaper, chandeliers, furniture, electronics, white goods, curtains, hard and soft landscaping, pavements, features, gym, swimming pool(s) and other elements displayed in the brochure, or within the show apartment or between the plot boundary and the unit, are not part of the unit and are shown for illustrative purposes only.



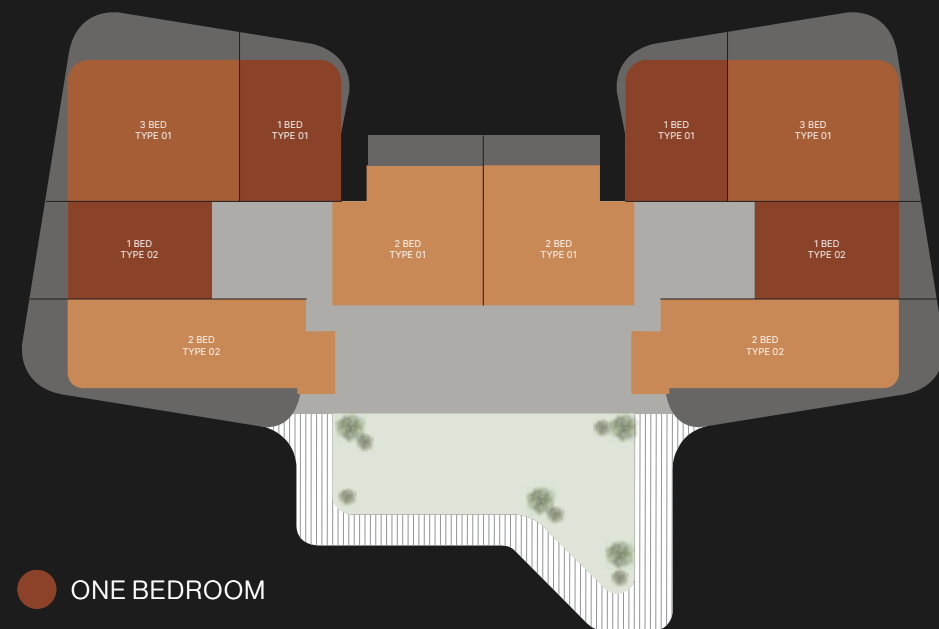
DUBAI CANAL

TYPICAL  
FLOOR PLAN  
SKY SUITES

LEVEL

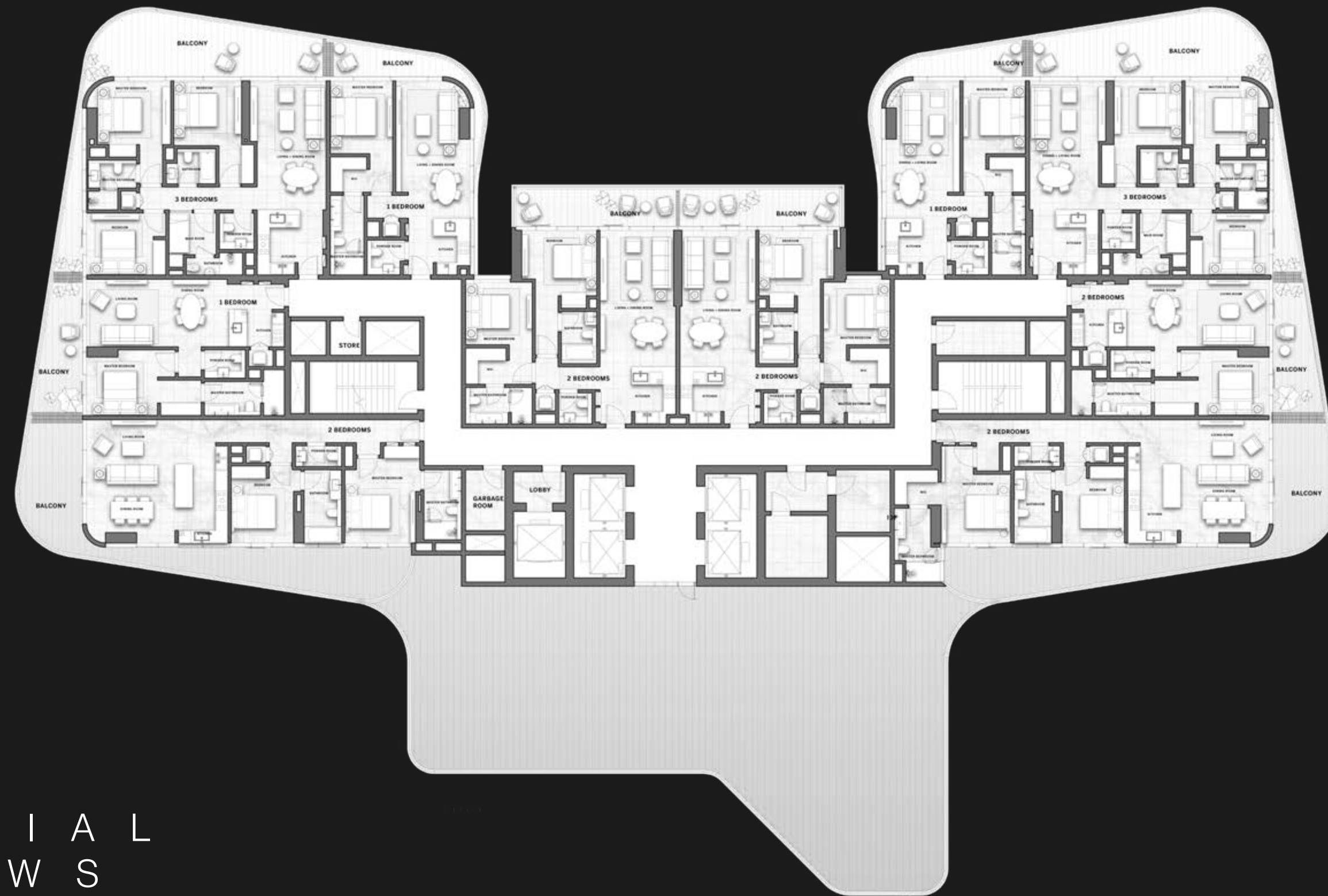
16

DIRECT ACCESS TO  
THE SKY GARDEN



- ONE BEDROOM
- TWO BEDROOMS
- THREE BEDROOMS

Disclaimer: All pictures, plans, layouts, information, data and details included in this brochure are indicative only and may change at any time up to the final 'as built' status in accordance with final designs of the project, regulatory approvals and planning permissions. All accessories and interior finishes such as wallpaper, chandeliers, furniture, electronics, white goods, curtains, hard and soft landscaping, pavements, features, gym, swimming pool(s) and other elements displayed in the brochure, or within the show apartment or between the plot boundary and the unit, are not part of the unit and are shown for illustrative purposes only.



PARTIAL  
VIEWS

PARTIAL  
VIEWS

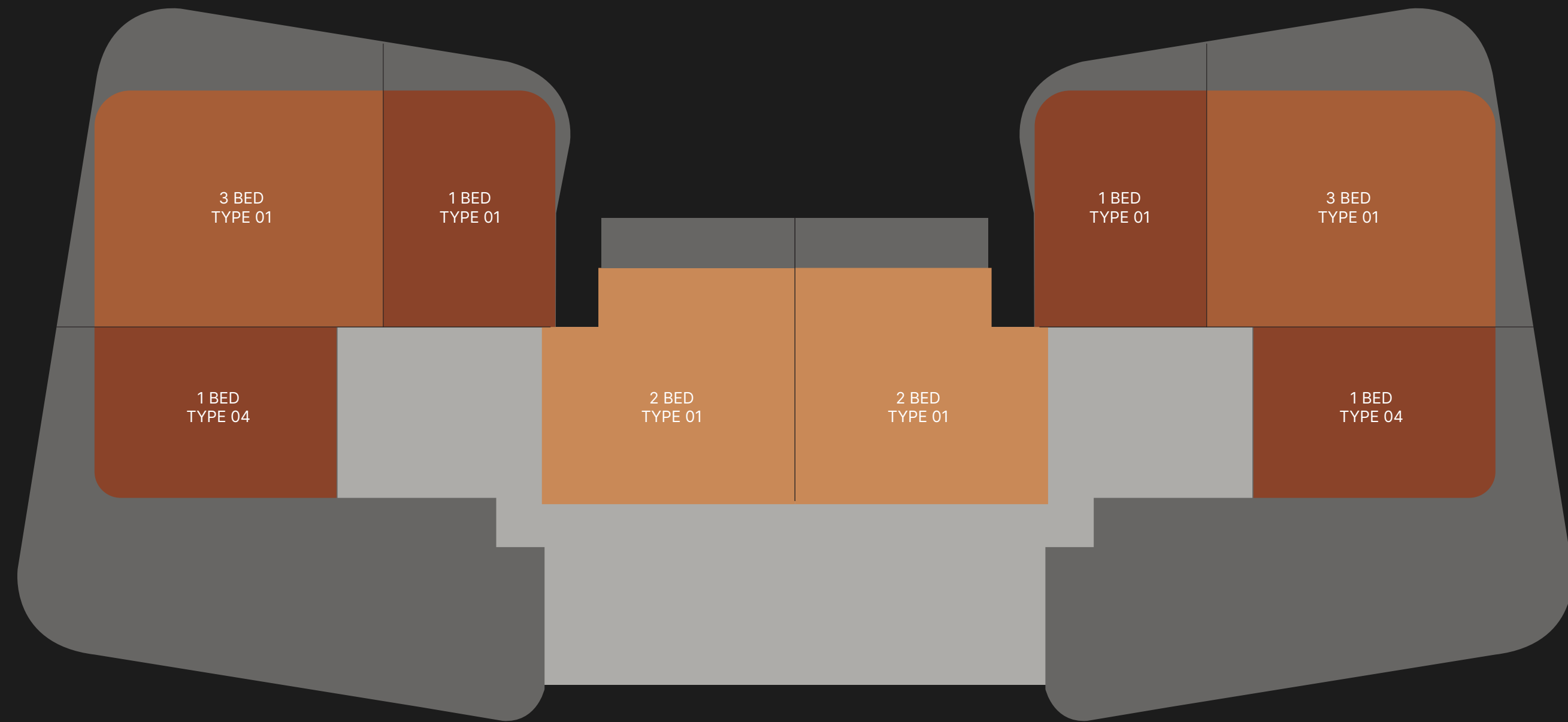
CITY VIEWS

# TYPICAL FLOOR PLAN SKY SUITES

LEVEL

17

OVERLOOKING  
THE SKY GARDEN



PARTIAL  
VIEWS

PARTIAL  
VIEWS

- ONE BEDROOM
- TWO BEDROOMS
- THREE BEDROOMS

Disclaimer: All pictures, plans, layouts, information, data and details included in this brochure are indicative only and may change at any time up to the final 'as built' status in accordance with final designs of the project, regulatory approvals and planning permissions. All accessories and interior finishes such as wallpaper, chandeliers, furniture, electronics, white goods, curtains, hard and soft landscaping, pavements, features, gym, swimming pool(s) and other elements displayed in the brochure, or within the show apartment or between the plot boundary and the unit, are not part of the unit and are shown for illustrative purposes only.

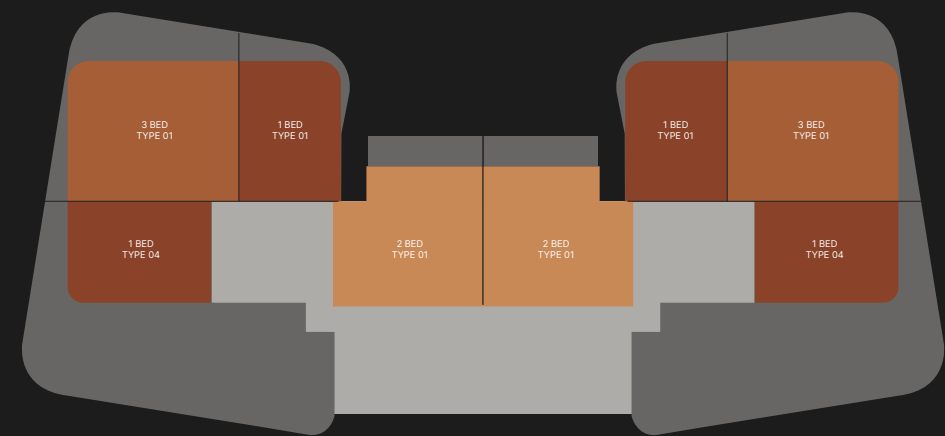
CITY VIEWS

# TYPICAL FLOOR PLAN SKY SUITES

LEVEL

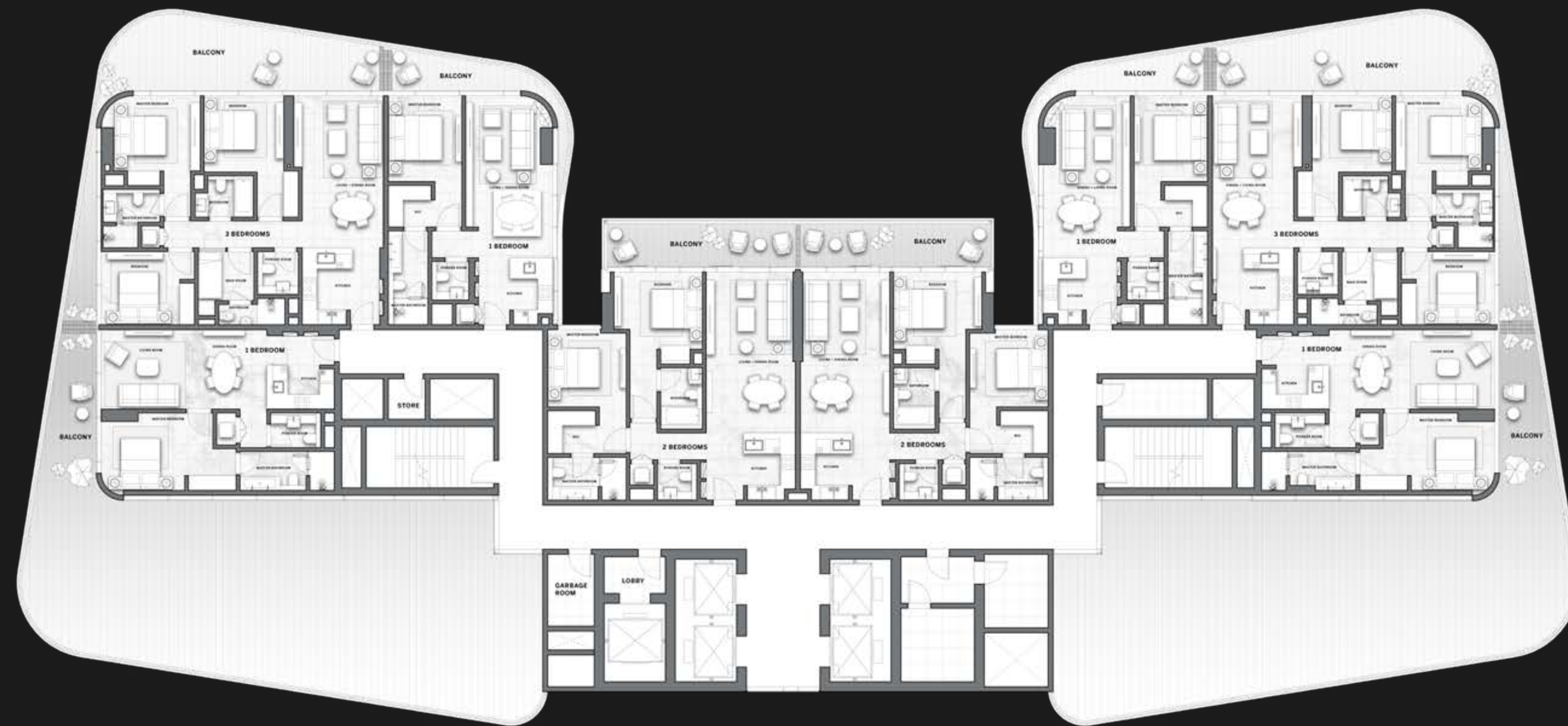
17

OVERLOOKING  
THE SKY GARDEN



- ONE BEDROOM
- TWO BEDROOMS
- THREE BEDROOMS

Disclaimer: All pictures, plans, layouts, information, data and details included in this brochure are indicative only and may change at any time up to the final 'as built' status in accordance with final designs of the project, regulatory approvals and planning permissions. All accessories and interior finishes such as wallpaper, chandeliers, furniture, electronics, white goods, curtains, hard and soft landscaping, pavements, features, gym, swimming pool(s) and other elements displayed in the brochure, or within the show apartment or between the plot boundary and the unit, are not part of the unit and are shown for illustrative purposes only.



PARTIAL  
VIEWS

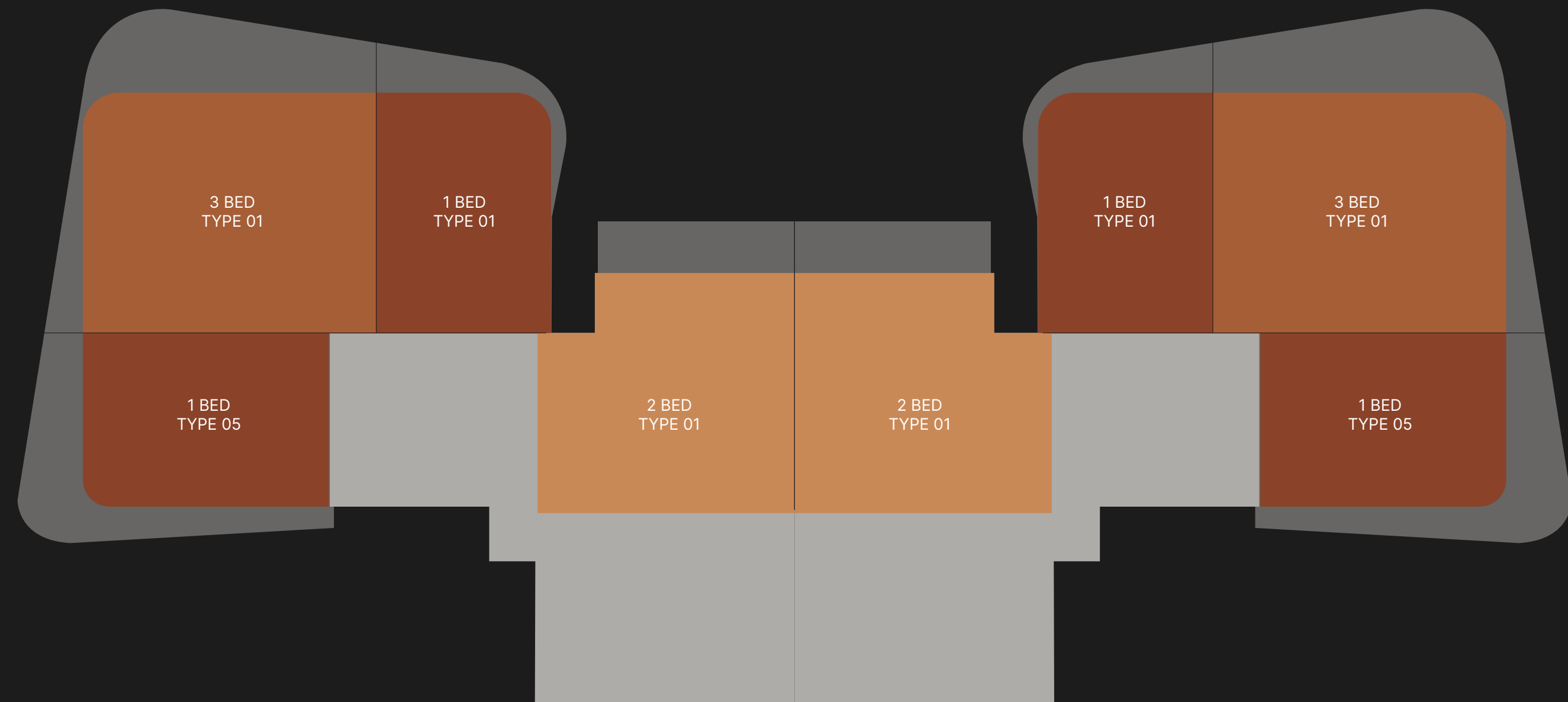
PARTIAL  
VIEWS

CITY VIEWS

# TYPICAL FLOOR PLAN SKY SUITES

LEVELS  
18 - 19

OVERLOOKING  
THE SKY GARDEN



PARTIAL  
VIEWS

PARTIAL  
VIEWS

- ONE BEDROOM
- TWO BEDROOMS
- THREE BEDROOMS

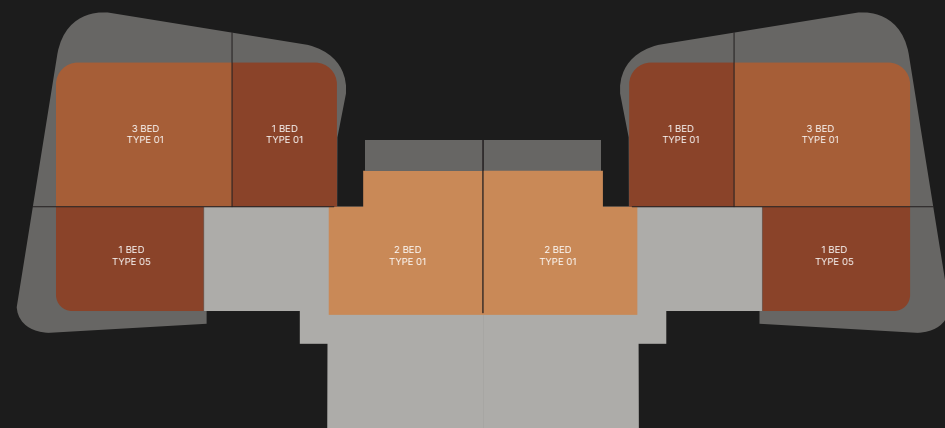
Disclaimer: All pictures, plans, layouts, information, data and details included in this brochure are indicative only and may change at any time up to the final 'as built' status in accordance with final designs of the project, regulatory approvals and planning permissions. All accessories and interior finishes such as wallpaper, chandeliers, furniture, electronics, white goods, curtains, hard and soft landscaping, pavements, features, gym, swimming pool(s) and other elements displayed in the brochure, or within the show apartment or between the plot boundary and the unit, are not part of the unit and are shown for illustrative purposes only.

CITY VIEWS

# TYPICAL FLOOR PLAN SKY SUITES

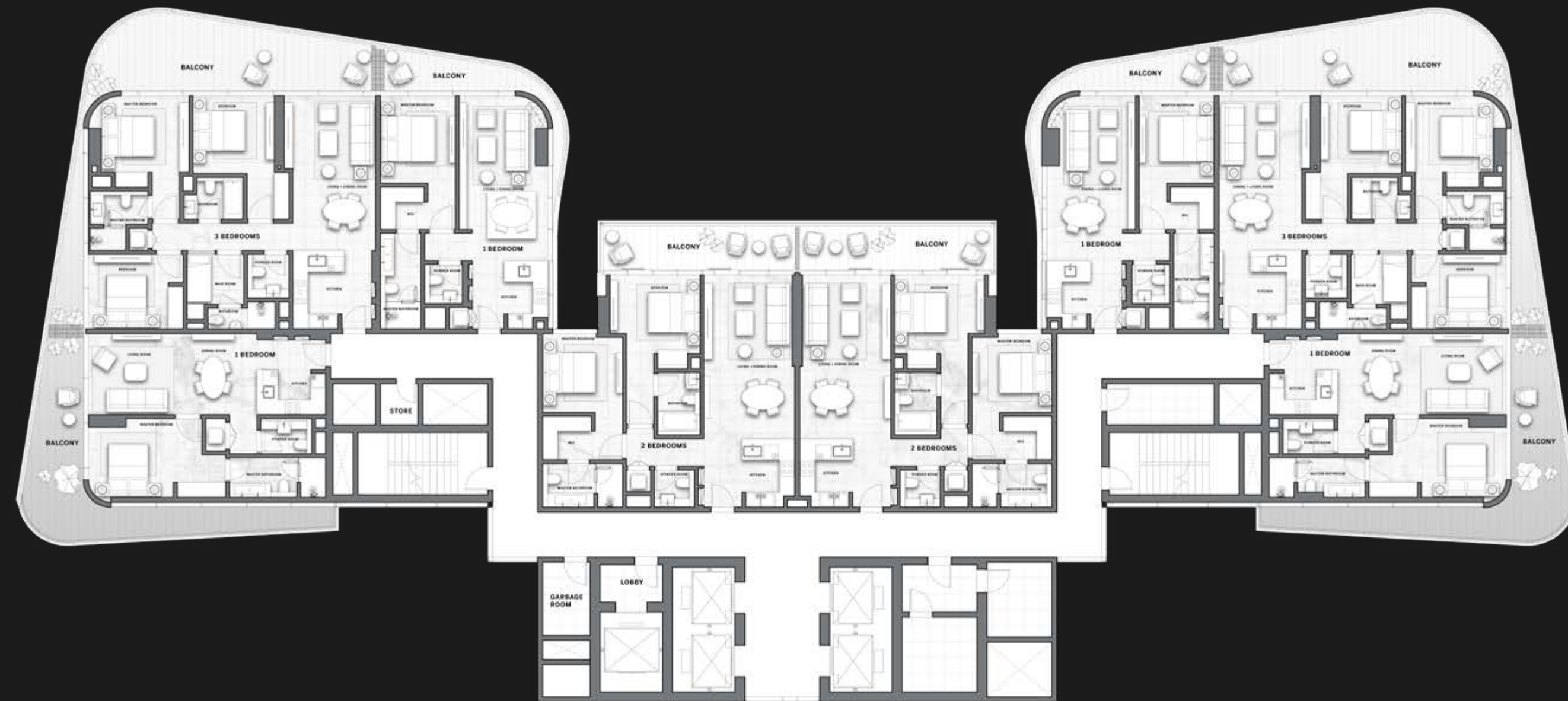
LEVELS  
18 - 19

OVERLOOKING  
THE SKY GARDEN



- ONE BEDROOM
- TWO BEDROOMS
- THREE BEDROOMS

Disclaimer: All pictures, plans, layouts, information, data and details included in this brochure are indicative only and may change at any time up to the final 'as built' status in accordance with final designs of the project, regulatory approvals and planning permissions. All accessories and interior finishes such as wallpaper, chandeliers, furniture, electronics, white goods, curtains, hard and soft landscaping, pavements, features, gym, swimming pool(s) and other elements displayed in the brochure, or within the show apartment or between the plot boundary and the unit, are not part of the unit and are shown for illustrative purposes only.



PARTIAL  
VIEWS

PARTIAL  
VIEWS

CITY VIEWS

**1-BED  
TYPE 01**

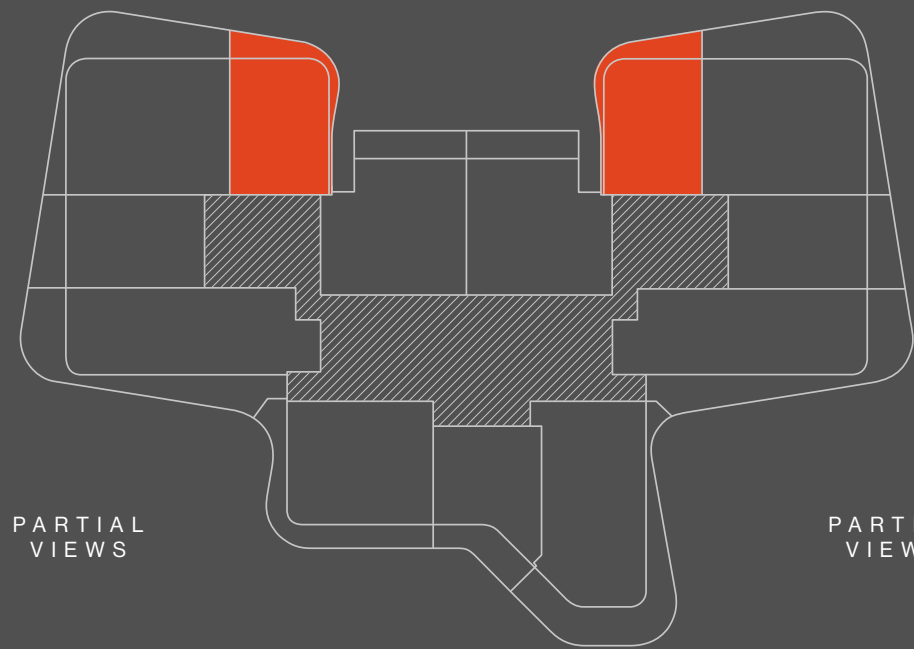
**LEVELS**  
1 - 19



BURJ KHALIFA



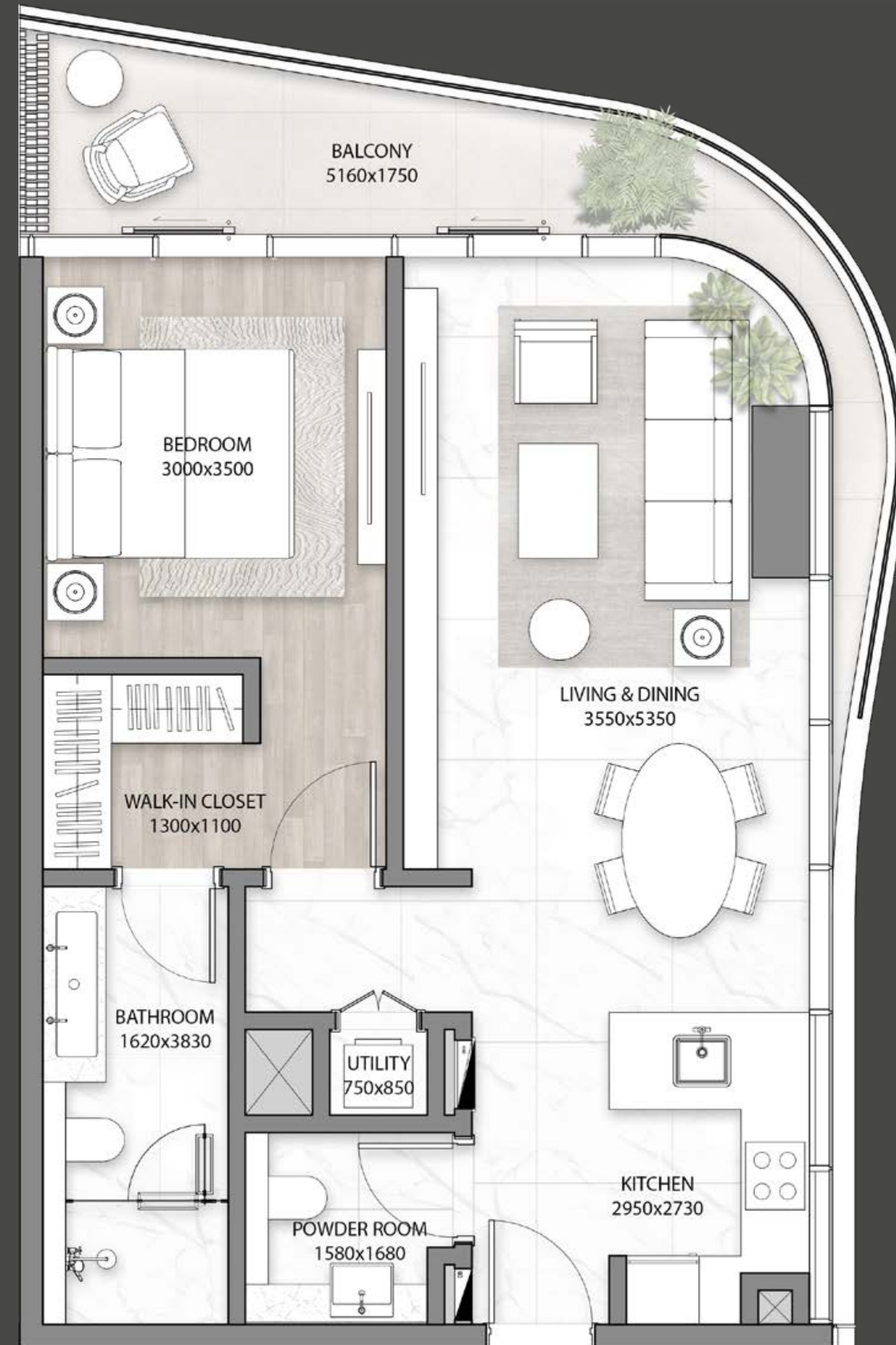
DUBAI CANAL



PARTIAL  
VIEWS

PARTIAL  
VIEWS

CITY VIEWS



<b>INTERNAL AREA</b>	sqm 66	sqft 710
<b>BALCONY</b>	sqm 10 - 22	sqft 108 - 237
<b>TOTAL</b>	<b>sqm 76 - 88</b>	<b>sqft 818 - 947</b>

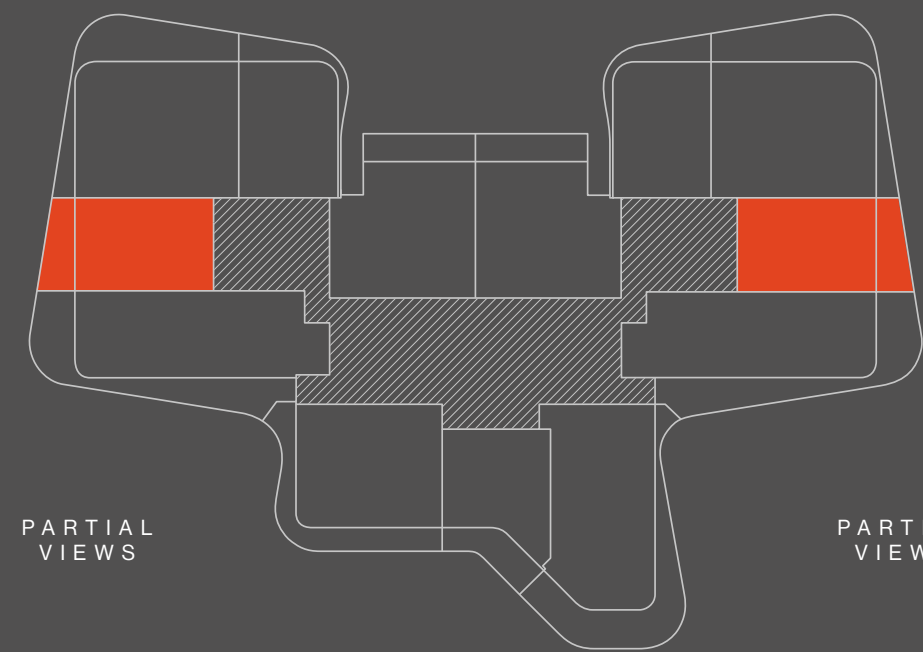
Disclaimer: All pictures, plans, layouts, information, data and details included in this brochure are indicative only and may change at any time up to the final 'as built' status in accordance with final designs of the project, regulatory approvals and planning permissions. All accessories and interior finishes such as wallpaper, chandeliers, furniture, electronics, white goods, curtains, hard and soft landscaping, pavements, features, gym, swimming pool(s) and other elements displayed in the brochure, or within the show apartment or between the plot boundary and the unit, are not part of the unit and are shown for illustrative purposes only.

**1-BED  
TYPE 02**

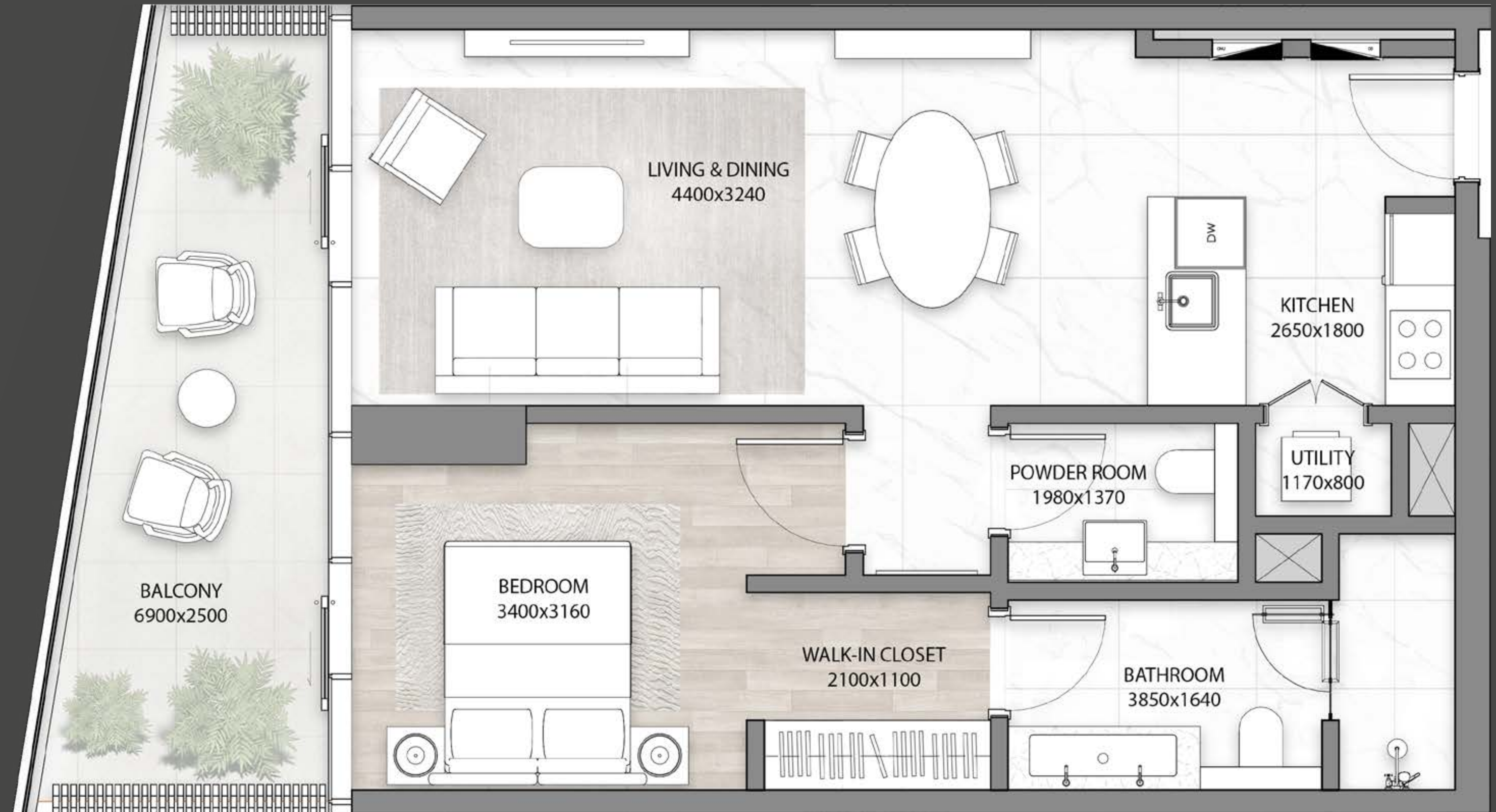
**LEVELS**  
1 - 19

BURJ KHALIFA

DUBAI CANAL



CITY VIEWS

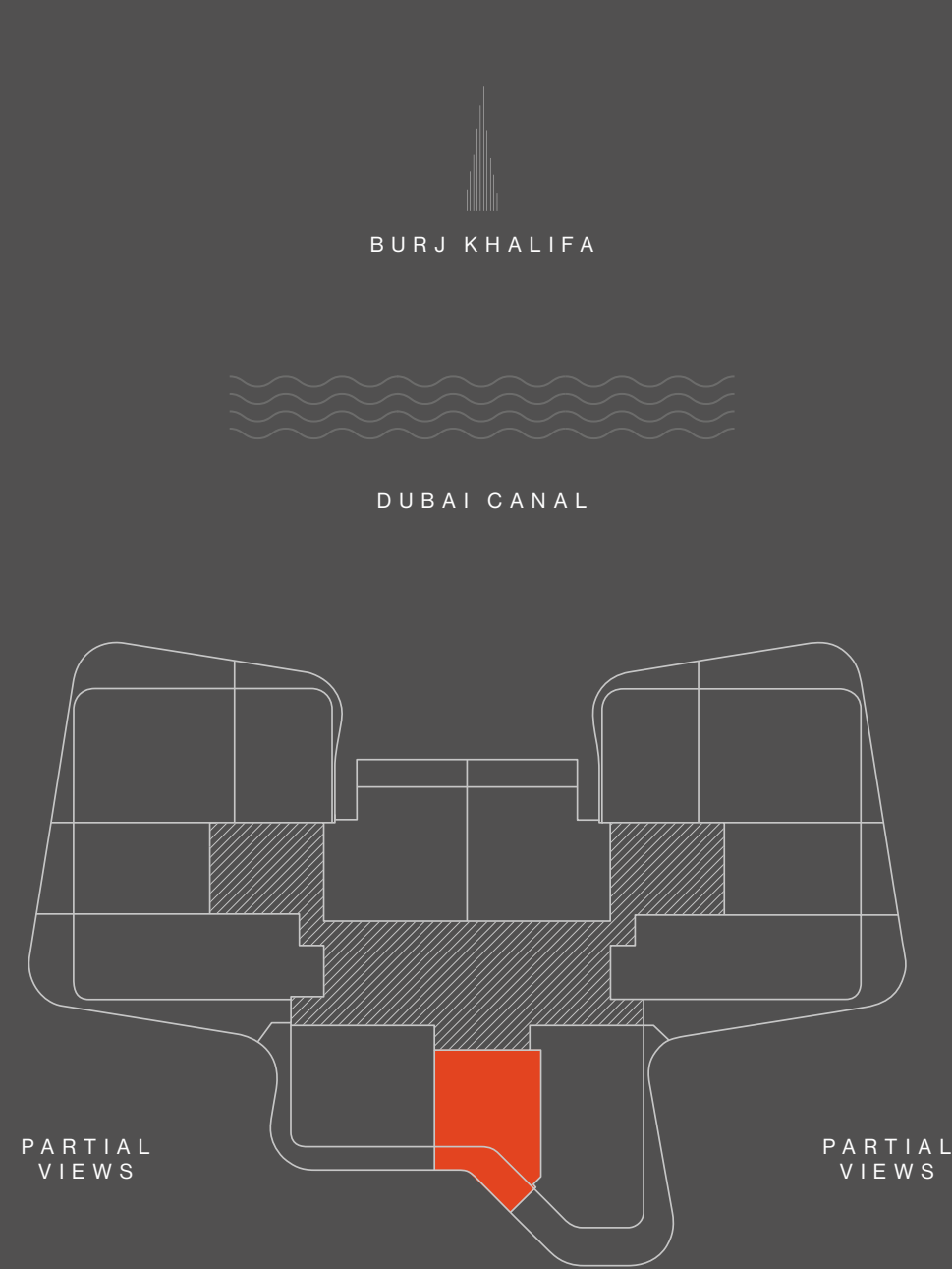


<b>INTERNAL AREA</b>	sqm 66	sqft 710
<b>BALCONY</b>	sqm 13 - 15	sqft 140 - 161
<b>TOTAL</b>	<b>sqm 79 - 81</b>	<b>sqft 850 - 871</b>

Disclaimer: All pictures, plans, layouts, information, data and details included in this brochure are indicative only and may change at any time up to the final 'as built' status in accordance with final designs of the project, regulatory approvals and planning permissions. All accessories and interior finishes such as wallpaper, chandeliers, furniture, electronics, white goods, curtains, hard and soft landscaping, pavements, features, gym, swimming pool(s) and other elements displayed in the brochure, or within the show apartment or between the plot boundary and the unit, are not part of the unit and are shown for illustrative purposes only.

**1-BED  
TYPE 03**

**LEVELS**  
1 - 15



<b>INTERNAL AREA</b>	sqm 60	sqft 646
<b>BALCONY</b>	sqm 14 - 15	sqft 151 - 161
<b>TOTAL</b>	<b>sqm 74 - 75</b>	<b>sqft 797 - 807</b>

Disclaimer: All pictures, plans, layouts, information, data and details included in this brochure are indicative only and may change at any time up to the final 'as built' status in accordance with final designs of the project, regulatory approvals and planning permissions. All accessories and interior finishes such as wallpaper, chandeliers, furniture, electronics, white goods, curtains, hard and soft landscaping, pavements, features, gym, swimming pool(s) and other elements displayed in the brochure, or within the show apartment or between the plot boundary and the unit, are not part of the unit and are shown for illustrative purposes only.



1-BED  
TYPE 04

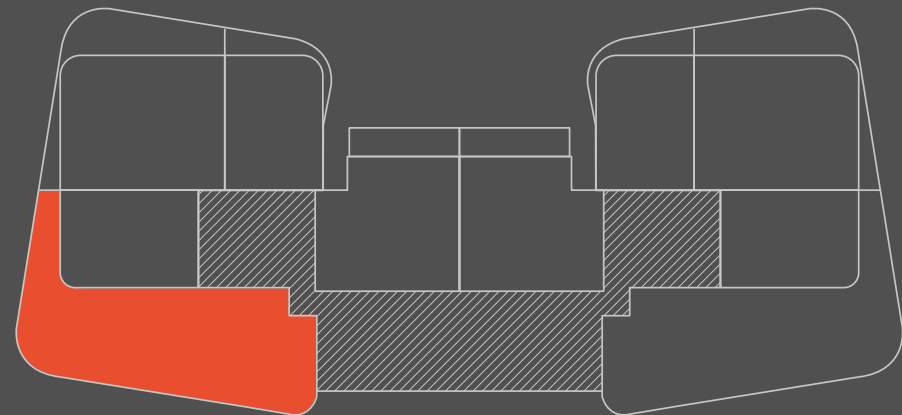
LEVEL  
17



BURJ KHALIFA



DUBAI CANAL



PARTIAL  
VIEWS

PARTIAL  
VIEWS

CITY VIEWS



INTERNAL AREA	sqm 60	sqft 646
BALCONY	sqm 14 - 15	sqft 151 - 161
<b>TOTAL</b>	<b>sqm 74 - 75</b>	<b>sqft 797 - 807</b>

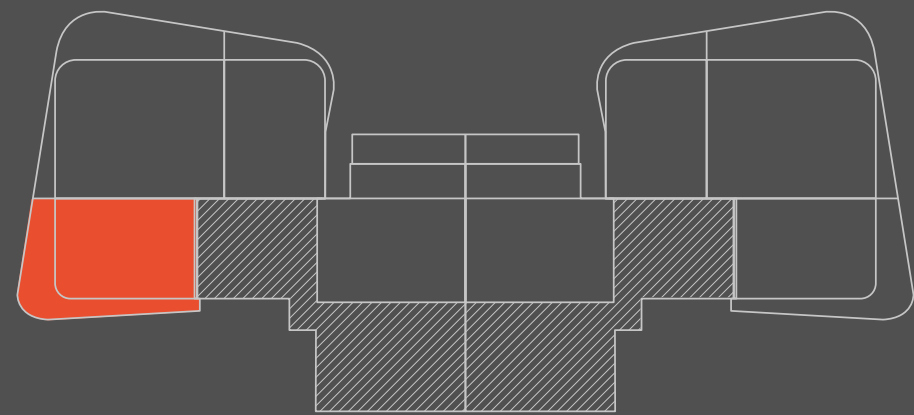
Disclaimer: All pictures, plans, layouts, information, data and details included in this brochure are indicative only and may change at any time up to the final 'as built' status in accordance with final designs of the project, regulatory approvals and planning permissions. All accessories and interior finishes such as wallpaper, chandeliers, furniture, electronics, white goods, curtains, hard and soft landscaping, pavements, features, gym, swimming pool(s) and other elements displayed in the brochure, or within the show apartment or between the plot boundary and the unit, are not part of the unit and are shown for illustrative purposes only.

**1-BED  
TYPE 05**

**LEVELS**  
18 - 19

BURJ KHALIFA

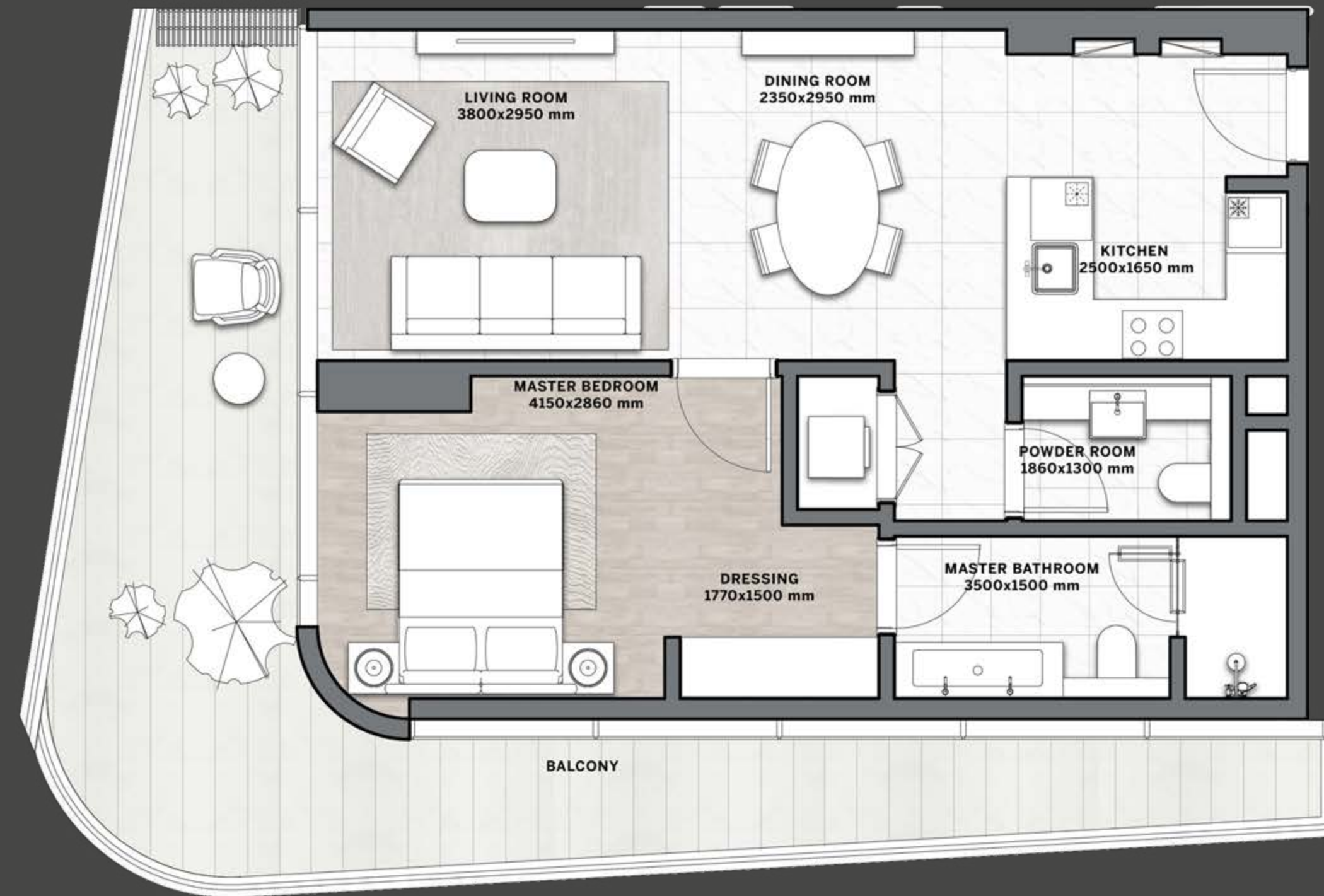
DUBAI CANAL



PARTIAL  
VIEWS

PARTIAL  
VIEWS

CITY VIEWS



<b>INTERNAL AREA</b>	sqm 60	sqft 646
<b>BALCONY</b>	sqm 14 - 15	sqft 151 - 161
<b>TOTAL</b>	<b>sqm 74 - 75</b>	<b>sqft 797 - 807</b>

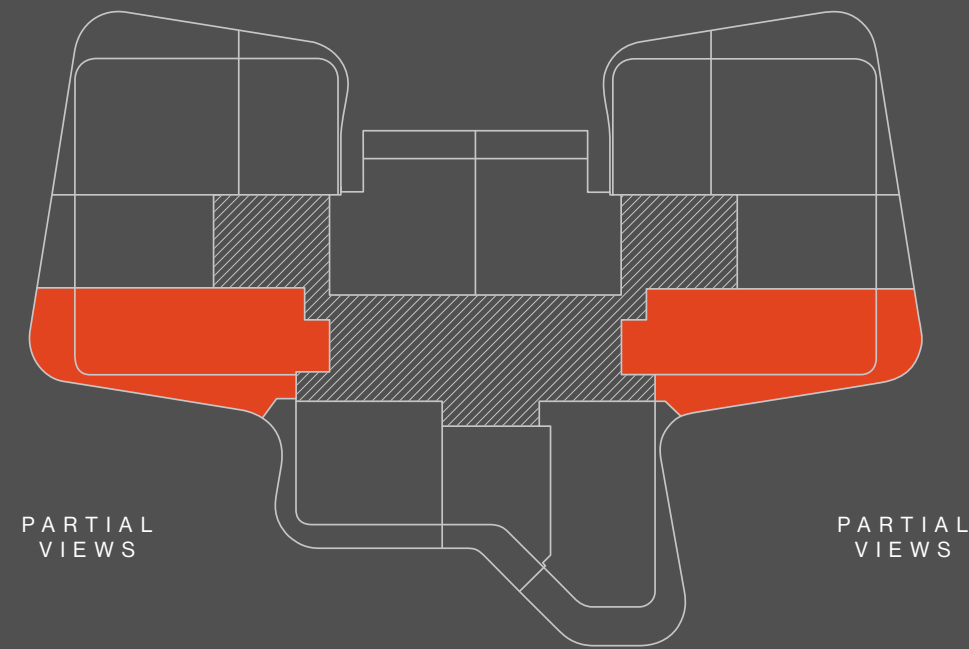
Disclaimer: All pictures, plans, layouts, information, data and details included in this brochure are indicative only and may change at any time up to the final 'as built' status in accordance with final designs of the project, regulatory approvals and planning permissions. All accessories and interior finishes such as wallpaper, chandeliers, furniture, electronics, white goods, curtains, hard and soft landscaping, pavements, features, gym, swimming pool(s) and other elements displayed in the brochure, or within the show apartment or between the plot boundary and the unit, are not part of the unit and are shown for illustrative purposes only.

2-BEDS  
TYPE 01

LEVELS  
1 - 19

BURJ KHALIFA

DUBAI CANAL



CITY VIEWS



INTERNAL AREA	sqm 108	sqft 1163
BALCONY	sqm 29 - 42	sqft 312 - 452
<b>TOTAL</b>	<b>sqm 137 - 150</b>	<b>sqft 1,475 - 1,615</b>

Disclaimer: All pictures, plans, layouts, information, data and details included in this brochure are indicative only and may change at any time up to the final 'as built' status in accordance with final designs of the project, regulatory approvals and planning permissions. All accessories and interior finishes such as wallpaper, chandeliers, furniture, electronics, white goods, curtains, hard and soft landscaping, pavements, features, gym, swimming pool(s) and other elements displayed in the brochure, or within the show apartment or between the plot boundary and the unit, are not part of the unit and are shown for illustrative purposes only.

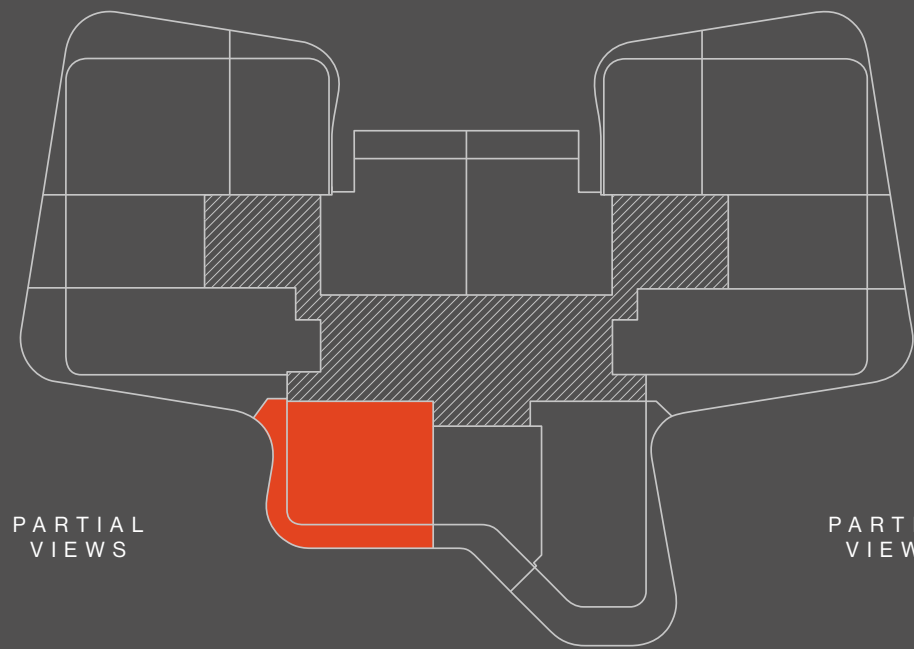
**2-BEDS  
TYPE 02**

**LEVELS**  
1 - 15



BURJ KHALIFA

DUBAI CANAL



PARTIAL  
VIEWS

PARTIAL  
VIEWS

CITY VIEWS

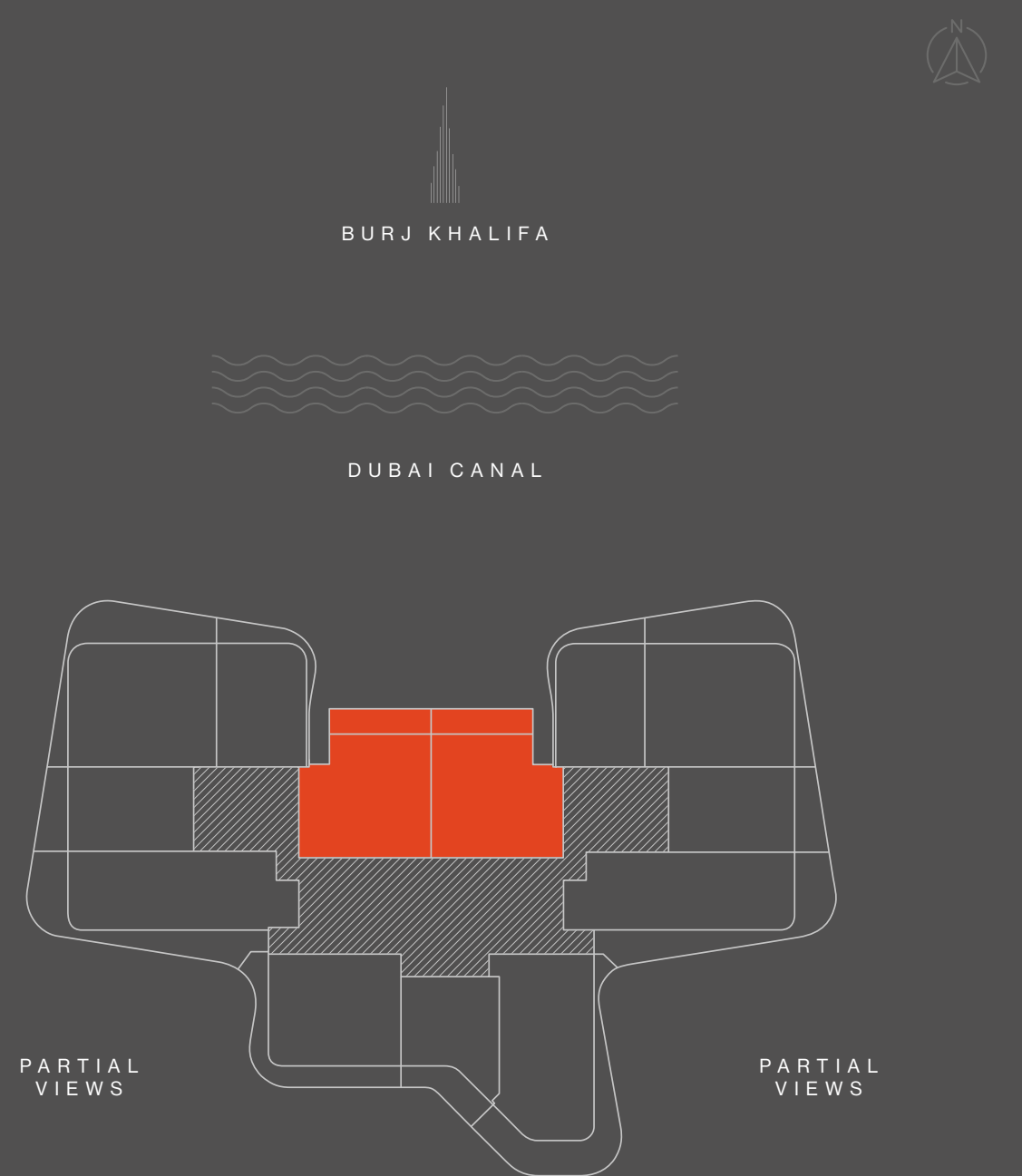


<b>INTERNAL AREA</b>	sqm 91	sqft 980
<b>BALCONY</b>	sqm 26 - 28	sqft 279 - 302
<b>TOTAL</b>	<b>sqm 117 - 119</b>	<b>sqft 1,259 - 1,281</b>

Disclaimer: All pictures, plans, layouts, information, data and details included in this brochure are indicative only and may change at any time up to the final 'as built' status in accordance with final designs of the project, regulatory approvals and planning permissions. All accessories and interior finishes such as wallpaper, chandeliers, furniture, electronics, white goods, curtains, hard and soft landscaping, pavements, features, gym, swimming pool(s) and other elements displayed in the brochure, or within the show apartment or between the plot boundary and the unit, are not part of the unit and are shown for illustrative purposes only.

**2-BEDS  
TYPE 03**

**LEVELS  
1 - 15**



CITY VIEWS

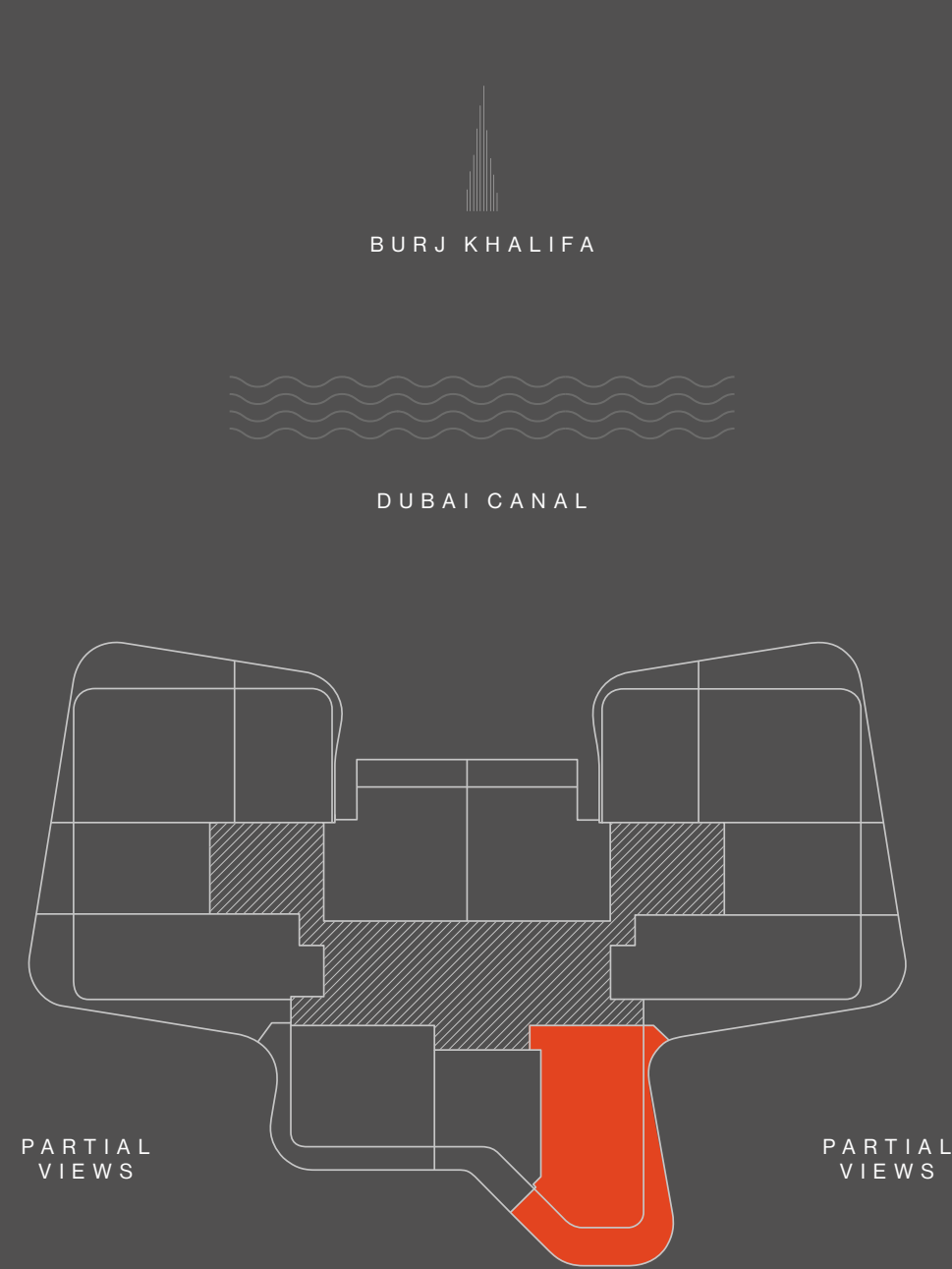


INTERNAL AREA	sqm 92	sqft 990
BALCONY	sqm 14	sqft 151
<b>TOTAL</b>	<b>sqm 106</b>	<b>sqft 1,141</b>

Disclaimer: All pictures, plans, layouts, information, data and details included in this brochure are indicative only and may change at any time up to the final 'as built' status in accordance with final designs of the project, regulatory approvals and planning permissions. All accessories and interior finishes such as wallpaper, chandeliers, furniture, electronics, white goods, curtains, hard and soft landscaping, pavements, features, gym, swimming pool(s) and other elements displayed in the brochure, or within the show apartment or between the plot boundary and the unit, are not part of the unit and are shown for illustrative purposes only.

**2-BEDS  
TYPE 04**

**LEVELS**  
1 - 15

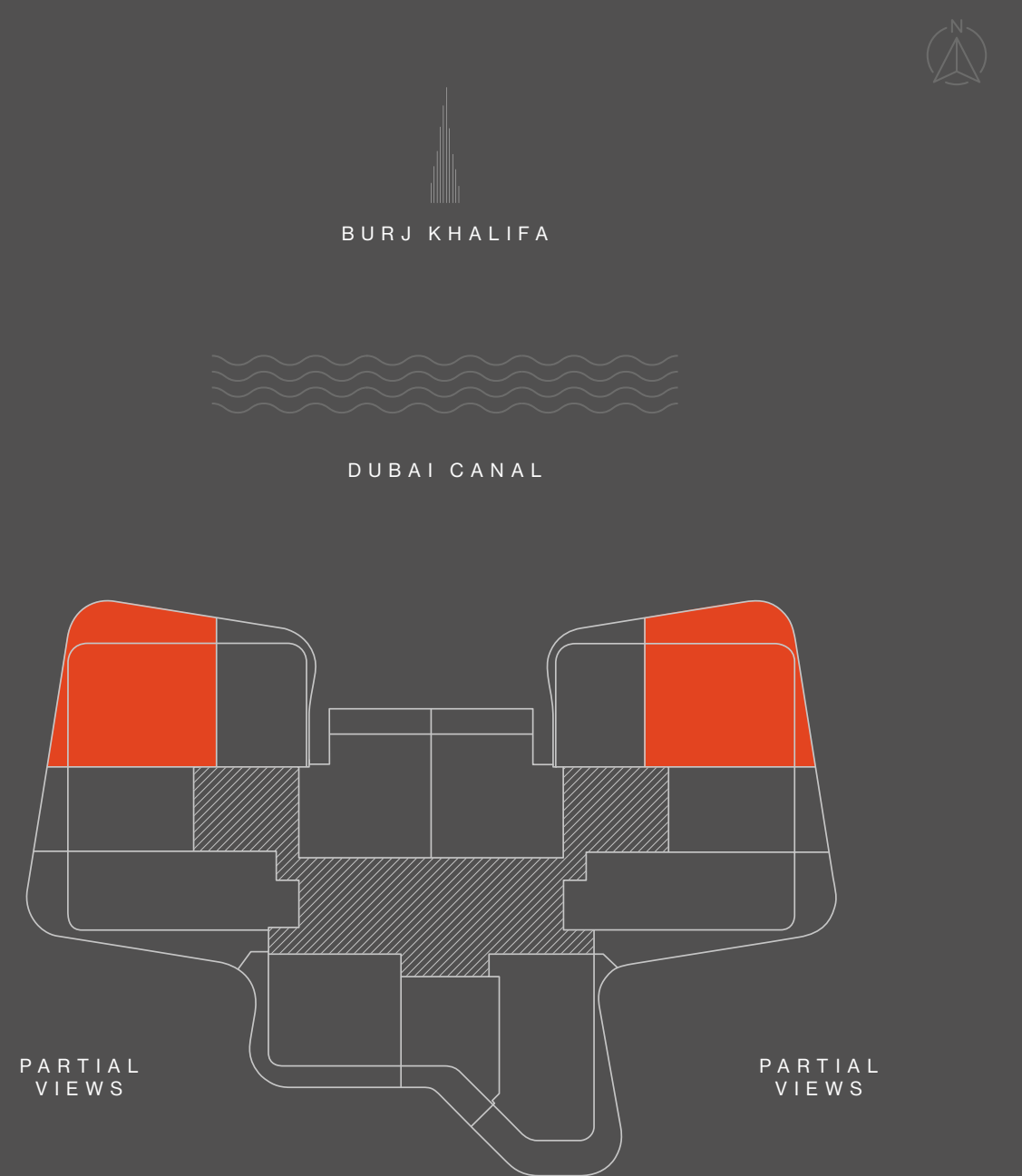


<b>INTERNAL AREA</b>	sqm 107	sqft 1,152
<b>BALCONY</b>	sqm 39 - 46	sqft 420 - 495
<b>TOTAL</b>	<b>sqm 146 - 153</b>	<b>sqft 1,572 - 1,647</b>

Disclaimer: All pictures, plans, layouts, information, data and details included in this brochure are indicative only and may change at any time up to the final 'as built' status in accordance with final designs of the project, regulatory approvals and planning permissions. All accessories and interior finishes such as wallpaper, chandeliers, furniture, electronics, white goods, curtains, hard and soft landscaping, pavements, features, gym, swimming pool(s) and other elements displayed in the brochure, or within the show apartment or between the plot boundary and the unit, are not part of the unit and are shown for illustrative purposes only.

**3 - BEDS  
TYPE 01**

**LEVELS**  
1 - 19



<b>INTERNAL AREA</b>	sqm 112	sqft 1,206
<b>BALCONY</b>	sqm 35 - 53	sqft 376 - 570
<b>TOTAL</b>	sqm 147 - 165	sqft 1,582 - 1,776

Disclaimer: All pictures, plans, layouts, information, data and details included in this brochure are indicative only and may change at any time up to the final 'as built' status in accordance with final designs of the project, regulatory approvals and planning permissions. All accessories and interior finishes such as wallpaper, chandeliers, furniture, electronics, white goods, curtains, hard and soft landscaping, pavements, features, gym, swimming pool(s) and other elements displayed in the brochure, or within the show apartment or between the plot boundary and the unit, are not part of the unit and are shown for illustrative purposes only.



DCI





REGISTER



YOUR INTEREST



[DARGLOBAL.CO.UK/DG1/](https://DARGLOBAL.CO.UK/DG1/)

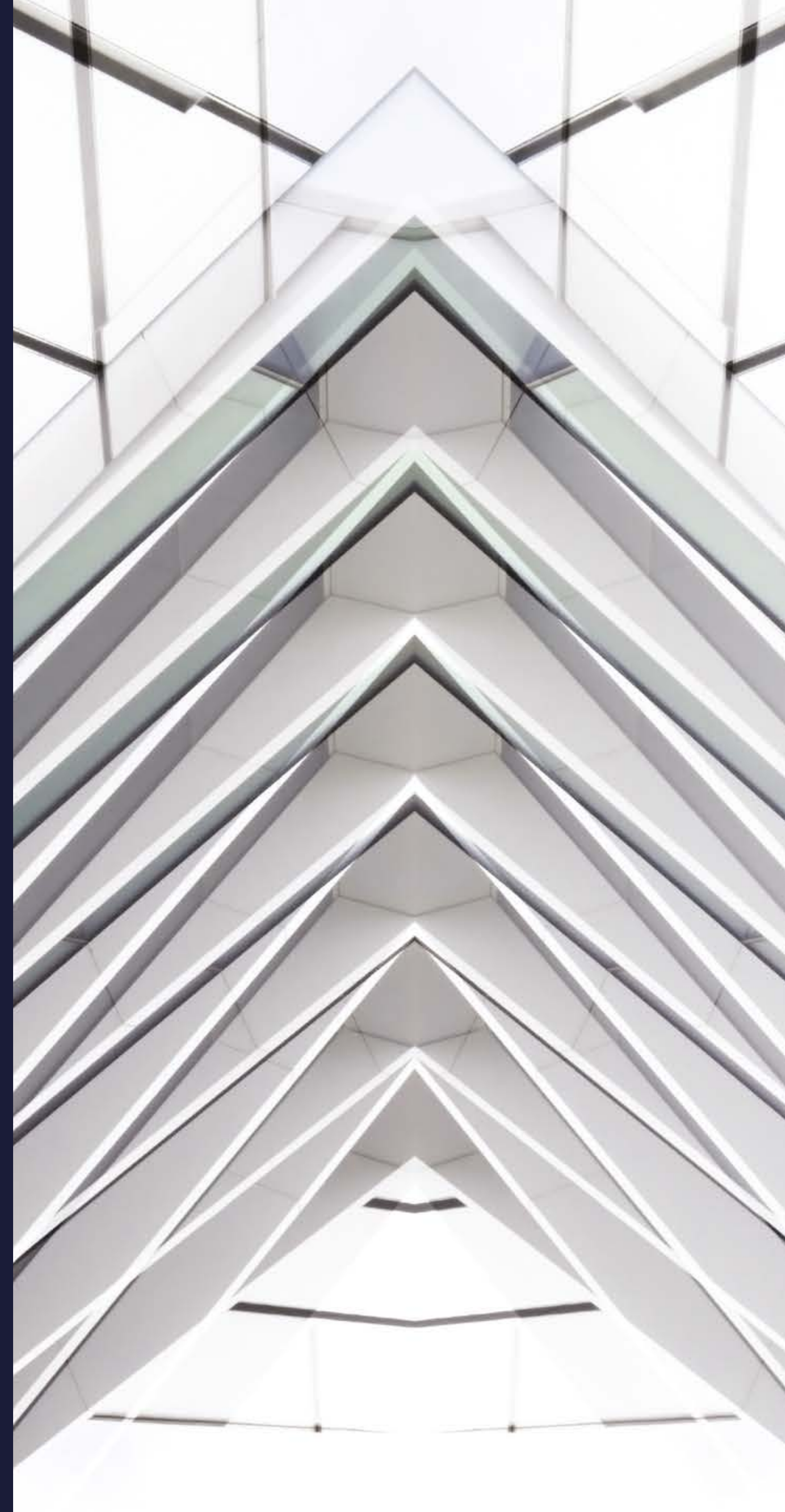
DAR GLOBAL PLC

**DARGLOBAL**

## **LISTED ON THE LONDON STOCK EXCHANGE**

Established in 2017 to upend the global luxury real estate market, DarGlobal combines experience and innovation to deliver the highest quality properties. World-class architects curate DarGlobal's homes that are modelled by renowned design icons; each DarGlobal home is built with the highest quality materials and maintained by experts within the field.

DarGlobal believes there is no better investment than an investment in luxury and takes pride in choosing the best-in-class locations and properties to provide lucrative investment opportunities for a distinct clientele.



BUILDING ON THE LEGACY  
OF THE LARGEST REAL ESTATE  
COMPANY IN THE REGION.

—  
**6**  
offices in different  
cities worldwide

—  
**28**  
years of  
experience

—  
**15,000+**  
residential units  
delivered

—  
**8.2 Bn**  
USD in assets

—  
**500,000 sqm**  
of commercial space

## OUR OFFICES

# DARGLOBAL

### DUBAI, UAE

Media One Tower, Al Falak  
Street – Al Sufouh, Al Sufouh 2,  
PO Box 2523, Dubai,  
United Arab Emirates  
T +971 4 247 8999

### MARBELLA, SPAIN

Marbella Club Golden Mile,  
Av. Bulevar Príncipe Alfonso  
de Hohenlohe, Marbella 29602,  
Málaga, Spain  
T +34 951 74 44 84

### LONDON, UK

50 Hans Crescent,  
Knightsbridge, London,  
SW1X 0NA, United Kingdom  
T +44 7875 495156

### DOHA, QATAR

Malibu Building,  
Lusail Entertainment City,  
Doha, Qatar  
T +974 800 3536

### BEIJING, CHINA

303-309, North Tower,  
Beijing Kerry Centre,  
No.1 Guanghai Road,  
Chaoyang District, Beijing  
T +86 132 5888 6222

### MUSCAT, OMAN

Royal Opera House Muscat  
Shatti Al Qurum, Muscat,  
Sultanate of Oman  
T +968 2270 2777

---

For more information on DG1  
please call [+971 800 4040 \(UAE\)](tel:+9718004040)

You can visit our website at [darglobal.co.uk](http://darglobal.co.uk)  
or via our social media platforms



**DARGLOBAL**

[DARGLOBAL.CO.UK](http://DARGLOBAL.CO.UK)